

---

**EAST SIDE UNION HIGH SCHOOL DISTRICT**  
**ADA TRANSITION PLAN**  
**March 11, 2005**

---



**Perkins & Will**  
**617 West Seventh Street, Suite 1200**  
**Los Angeles, California 90017**

**in association with**

**Patrick Sullivan Associates**  
**110 Harvard Avenue**  
**Claremont, California 91711**  
**(909) 624-4051**

**TABLE OF CONTENTS**

<b>I.</b>	<b>INTRODUCTION .....</b>	<b>1</b>
<b>II.</b>	<b>PROJECT APPROACH .....</b>	<b>5</b>
	Development of the Transition Plan .....	7
	Public Forum .....	10
	How To Use This Transition Plan .....	11
	Maintenance .....	11
	Responsible Official .....	12
	Summary of Accessibility Survey Questions .....	12
<b>III.</b>	<b>BARRIER REMOVAL IMPLEMENTATION .....</b>	<b>19</b>
	Summary of Barrier Removal Implementation by Phases .....	19
	Overview of Total Barrier Removal Implementation by School .....	20
	Overview of Phases by School .....	21
	Photographs of Typical Barriers .....	22
	Andrew Hill High School .....	30
	Foothill Alternative Education High School .....	33
	Independence High School and Pegasus Alternative Education High School .....	35
	James Lick High School .....	38
	Mt. Pleasant High School .....	40
	Oak Grove High School .....	42
	Piedmont Hills High School .....	45
	Santa Teresa High School and Phoenix Alternative Education High School .....	48
	Silver Creek High School .....	51
	W.C. Overfelt High School and Apollo Alternative Education High School .....	54
	Yerba Buena High School .....	57
	Educational Center .....	60
<b>IV.</b>	<b>MAINTENANCE .....</b>	<b>62</b>
<b>V.</b>	<b>APPENDIX .....</b>	<b>72</b>
	Completed Modifications Form .....	72
	Changes in Priorities to Implementation Table .....	73

---

# **Introduction**

---

## **INTRODUCTION**

The American with Disabilities Act (ADA) of 1990 is a civil rights legislation that became effective on January 26, 1992, and was amended on July 1994 and September 1998. It includes guidelines for the design or modification of new and existing facilities intended to ensure that more than 43 million disabled Americans can gain access to public accommodations and the services that they provide.

As defined by the ADA, the East Side Union High School District (ESUHSD) is a public entity subject to the regulations spelled out by Title II, "Nondiscrimination on the Basis of Disability in State and Local Government Services," of the ADA. This portion of the ADA requires the District to develop documents that identify how it intends to modify its practices, policies, and facilities in order to comply with the civil rights intentions of the ADA. State-funded facilities have to comply with both state and federal accessibility requirements. They must meet the provisions of California Government Code 4450, as well as the ADA, whether new or existing.

ADA Title II requires that all public entities complete a Self-Evaluation and Transition Plan, which must outline all work necessary to attain a barrier-free program and facility. The Transition Plan, which identifies the structural modifications required to help achieve access to facilities and their provided programs, is an important element of ADA compliance and represents the best tool available to evaluate a public entity's compliance status. By completing this plan, a public entity will have demonstrated a good-faith effort towards federal and state accessibility code compliance.

California Government Code 4450(b) requires DSA/AC to ensure that projects submitted for review meet minimum requirements of the ADA. All public entities with ADA Title II responsibilities and under the jurisdiction of DSA/AC are required by federal mandate to complete a Self-Evaluation Transition Plan. DSA/AC is not the agency responsible for approving such a plan, however, in order to ensure the most cost-effective allocation of funds to meet federal and state accessibility requirements and to ensure full participation by people with disabilities in public life, the agency suggests that the following steps need to be taken:

- Appoint a knowledgeable ADA/504 compliance officer responsible for ongoing Title II program compliance and development/implementation of the self-evaluation plan for existing programs and services. Be responsible for maintaining and monitoring the transition plan objectives and timetable. Encourage and maintain public participation and awareness. Respond to enquiries from the public, employees and clients.
- Create a Disability Advisory Committee (DAC) whose membership will include employees, clients and community participants. The committee should include a broad representation of persons with disabilities.

- Complete the self-evaluation plan with the DAC. Hold public hearings on the Self-Evaluation Plan, including comment periods as required for adequate public input. Implement all corrective measures related to policies, programs, and activities identified by the Self-Evaluation Plan.
- As part of the development of the Transition Plan, survey all facilities, identify architectural barriers, and establish a timetable for corrective action with DAC and public participation. Develop a program evaluation plan to ensure program focus and on-time outcomes. *Any departure from the requirements of the California Building Standards Code (CBSC) identified in the Transition Plan should be reviewed and approved in writing by DSA/AC after acceptable equivalent facilitation has been provided, per Government Code 4451(f).*
- Continue to maintain accessibility to all programs, services and facilities and required by ADA Title II and CBSC.

East Side Union High School District identified the need for an ADA Transition Plan after reviewing the Perkins and Will's *Needs Assessment Report* for the 11 ESUHSD school campuses. The Needs Assessment was initiated as the first step in developing a scope of the modernization work for the ESUHSD Master Plan for Bond Measure "G".

ESUHSD also met the first requirement for its Transition Plan when it requested Perkins & Will and Patrick Sullivan Associates (P&W/PSA) to survey its 11 campuses and report the physical barriers that limit access by disabled individuals to the District's programs and activities. The survey and cost analysis, which was completed on August 5, 2003, includes unit costs for each access barrier and an order of magnitude cost to remove each type of barrier. The survey did not include scheduling or prioritization of the remodel work.

ESUHSD has engaged P&W/PSA to assist in the completion of the remaining requirements for the Transition Plan:

1. Describe the methods that will be used to make the facilities accessible;
2. Specify the schedule (*in conjunction with Perkins and Will's modernization projects*) to be followed in implementing barrier removal; and
3. Indicate the ESUHSD official responsible for implementation of the plan and community contact.

The survey of facilities identified a total of approximately \$19 million of modifications needed to meet all specifications of the ADA's Architectural Guidelines at 11 high school campuses. The survey report also states that *not all facilities are required to be accessible*. The ADA requires only that ESUHSD's programs, services, and activities be accessible when viewed in

their entirety. For example, one chemistry lab is to be located along the accessible path of travel. As a result, the actual cost of making ESUHSD's schools and other facilities comply with the ADA may be considerably less than the \$19 million. The Transition Plan identifies those barriers at each facility that actually need to be modified. In many cases, alternate methods for barrier removal other than those explicitly outlined by the ADA Architectural Guidelines can be implemented. The ADA specifically permits the use of alternate methods; in fact, it is encouraged in order to achieve at least some measure of accessibility where the Architectural Guidelines cannot be met due to financial or administrative burden.

The process of identifying which barriers need to be removed at each school or administrative facility in the East Side Union High School District, how they should be removed, and in what order they should be removed required the participation of a number of people. Input has been received from ESUHSD representatives, consultants, staff members (teachers and administrators), and parents and other relatives of students. In meetings between District and Perkins & Will representatives, the ADA survey results were compared with ESUHSD budgetary projections, programs, policies, and activities to develop a preliminary list of prioritized barriers for removal over a four-phase schedule. Phase 1 lists barriers that should be corrected first. Phases 2 and 3 are barrier items that will need to be corrected during the modernization work at each site. Phase 4 identifies demand-response items that can be addressed when access is needed or items that will likely be eliminated when the other campus modernization work is completed.

This report will be submitted for public scrutiny at a Public Forum. Input received from the participants at this meeting will be incorporated into this report to produce the final Transition Plan.

As previously stated, a portion of the identified barriers are scheduled for removal during Phase 4 of the transition period. This category is referred to as "*demand response*" and reflects a policy consistent with past practices of the East Side Union High School District to be responsive to the needs of its students, staff, and other users. In effect, this policy states that, because it is impossible to anticipate the needs of all disabled individuals, the importance of certain barriers is unknown, and their removal will be addressed at such time as a specific need is identified by or for a disabled person.

The Transition Plan in its current form satisfies the ADA requirement to provide a document, available to the public, which can be used to achieve the architectural portion of compliance with the ADA. It is designed, as the ADA intends, to be a *living document* that can be modified, annotated, and updated throughout the process of implementation during the transition period. It should also be utilized to help improve and maintain accessibility to the East Side Union High School District's schools and other facilities after the initial implementation of barrier removal has been completed.

This report is divided into four sections: Introduction, Project Approach, Barrier Removal Implementation, and Maintenance. The Introduction section provides a general understanding of the report contents. The Project Approach section describes the requirements of the ADA with respect to the Transition Plan and the process that was followed to comply with these requirements. It also describes recommended methods for use of the Transition Plan document, as well as the ESUHSD official who is responsible for implementation of the Plan.

The Barrier Removal Implementation section consists of a series of spreadsheets -- one for each school or administrative facility campus -- in which the schedule and methods for barrier removal are identified. The barriers are identified by type, action required, item cost, and number of occurrences scheduled for removal during each of the four phases of the transition period.

The final Maintenance section of the Transition Plan contains a list of accessibility problems that can recur due to normal wear and tear on a facility and that can usually be resolved by a facility's own maintenance staff. While this portion is not specifically required by the ADA to be included in the Transition Plan, the ADA does specifically require that access to facilities be maintained.

With the completion of this Transition Plan, as with the Survey, the East Side Union High School District has shown itself to be a leader in the process of providing access for disabled individuals to educational facilities.

---

## **Project Approach**

---



## PROJECT APPROACH

The East Side Union High School District, as a public agency, is subject to the requirements of Title II, Nondiscrimination on the Basis of Disability in State and Local Government Services, of the Americans with Disabilities Act of 1990 (the ADA). One of the principal requirements of Title II is a Transition Plan, which sets forth the schedule and methods whereby a public agency intends to modify its physical facilities in order to achieve compliance with the ADA's civil rights guidelines. The ADA also requires that this Transition Plan be described in a document that is available to the public. The following has been produced in accordance with ADA specifications for the Transition Plan of the East Side Union High School District.

The ADA specifically states (§35.150(d)(3)) four requirements of the Transition Plan:

1. Identify physical obstacles that limit the accessibility of the agency's programs and activities to disabled individuals,
2. Describe the methods that will be used to make facilities accessible,
3. Specify the schedule for taking the steps necessary to achieve compliance during each year of the transition period, and
4. Indicate the official responsible for implementation of the plan.

The first of these requirements was met when the East Side Union High School District obtained a survey of its facilities from Perkins & Will/Patrick Sullivan Associates. The results of the survey were provided in a separate report.

The second step in transition planning involves recognition of the fact that *the ADA does not require the physical modification of all barriers to accessibility in existing facilities*. The ADA specifically allows for instances of "undue burden" and permits the use of methods other than those specified in its Architectural Guidelines (ADAAG) to achieve accessibility. In addition, *the ADA does not require all existing facilities to be accessible*. It requires only that the services, programs, and activities of a public agency -- when viewed overall -- be made readily accessible to and usable by individuals with disabilities. As a result, the Transition Plan needs to identify what methods will be used by an agency to achieve accessibility to its services, programs, and activities as a whole. In many instances, the best solution will be to modify a physical barrier in accordance with ADAAG, which sets forth known, accepted specifications for accessible facilities. Use of these guidelines generally reduces the risk of liability as well as the administrative burdens that often accompany alternative methods.

Use of these guidelines also usually represents the greatest financial burden, so universal application to all identified barriers is rarely feasible. *Alternative methods* used to achieve accessibility must also be identified in the Transition Plan. These include such solutions as

placing a paper-cup dispenser next to an otherwise-inaccessible drinking fountain, providing directional signage to indicate an accessible path of travel if the obvious route cannot be readily made accessible, and replacing a toilet stall door with a curtain if the door interferes with use of the fixture.

The third requirement of the Transition Plan is to identify a schedule for implementing barrier removal. Although it encourages agencies to achieve compliance as soon as possible, the ADA specifies January 26, 1995, as the date by which structural modifications should be completed. The schedule can be designed to implement barrier removal in phases that respond to (1) the impact that specific barriers may have on the public and staff of an agency and (2) the financial and administrative limitations of the agency. In this way, implementation can be designed to achieve the greatest amount of accessibility in the shortest amount of time, with the most efficient use of available funds.

The last requirement of the Transition Plan is to identify the individual who is responsible for implementation of the Plan. This official can then be the point of contact for members of the public and staff who have questions regarding the status of the Transition Plan or who have specific needs addressed in the schedule and/or methods identified in the Transition Plan. By identifying the individual who can represent its policies and practices, the agency facilitates communication and ensures that its implementation of accessibility is responsive to the needs of the users.

The ADA also requires that, in the course of developing its Transition Plan, an agency provide an opportunity for the public to offer their input.

It is important to recognize that the Transition Plan should be a *living document* that can change in response to the changing needs of the people served by the agency. The ADA recognizes that the existing needs of the disabled population are too numerous to be anticipated fully. As a result, the process of compliance spelled out in the ADA guidelines, including the design of the Transition Plan, is intentionally flexible. An agency's Transition Plan document should be set up so that barriers identified for removal at a particular time or by a particular method can be rescheduled or modified by some other means should it become apparent that the originally anticipated prioritization does not match the actual need. Some items originally identified as high priority may be less important than was thought, while others may require more immediate action than first planned.

## Development of the Transition Plan

The Transition Plan documentation for the 11 high schools and district facilities followed a sequence of steps, which included the following tasks:

1. Identify existing architectural barriers,
2. Identify programs and policies,
3. Identify feasible programmatic accommodations,
4. Identify structural modifications needed,
5. Identify instances of undue burden,
6. Determine alternate solutions,
7. Establish priorities, and
8. Set a schedule for implementation.

**Identification of Existing Barriers.** In the Fall of 2003, ESUHSD engaged P&W/PSA to survey 11 high school campus facilities and develop a report of their findings. The report identified barriers by campuses and quantities. It also provided a cost estimate to remove each of the identified barriers through modification that would meet the appropriate specifications in the ADA Architectural Guidelines. This represents the highest projected cost of physical compliance, as well as the greatest physical disruption of facilities during construction, and provides a baseline against which to determine potential instances of undue financial burden.

**Identification of Programs and Policies.** Programs and policies were identified through meetings between the consultant team and ESUHSD officials, as well as through examination of ESUHSD's documentation. This documentation identifies the District's philosophy, goals, objectives, comprehensive plans, community relations, administrative operations, business and non-instructional operations, personnel policies, and educational practices. Specific information on these policies as they relate to accessibility will be provided in the Self-Evaluation document that the District is preparing in compliance with ADA Title II requirements.

**Identification of Feasible Programmatic Solutions.** By comparing the survey of facilities with the services and activities that take place within the facilities, it was determined that programmatic accommodations could be made in many cases to reduce the extent of structural modification needed. Almost all schools had a certain number of classrooms that were already accessible or could be made accessible with a minimum of modification. Many high school classes can be relocated as needed from inaccessible classrooms to accessible ones. The same

holds true of administrative facilities, where departments that require the greatest amount of contact with the public can be moved to spaces that are or can easily be made accessible. The availability of accessible space also makes it feasible for ESUHSD to accommodate disabled employees as needed by moving workspace or by reassigning an employee to another facility.

Relocation of services or activities is not always feasible, however, where spaces have special fittings designed to accommodate specific activities. For example, science classrooms usually have workstations with gas and water provided for experiments; music rooms may have tiered flooring; and shops have woodworking, metalworking, photographic, or other equipment that is provided in only a single location on campus. If these specialized spaces are not accessible, the only alternatives are to modify the spaces or to transport a disabled student to another school with accessible facilities. Since the number of high schools is limited, and they are distributed relatively far apart, the latter option is seldom recommended. If equivalent facilitation cannot be provided by directing disabled users to alternative facilities, program modification should be pursued.

**Identification of Structural Modifications.** Structural changes in existing facilities are required only when there is no other feasible way to make the District's program accessible. It should be noted that "structural changes" include all physical changes to a facility; the term does not refer only to changes to structural features, such as removal of or alteration to a load-bearing structural member. The District may comply with the program accessibility requirements by delivering services at alternate accessible sites or making home visits as appropriate.

In order to take advantage of the programmatic solution of relocating services and activities from inaccessible locations to accessible ones, it was determined that at least one of each type of room or space at each school or administrative facility was a desirable goal. In addition, access to the front office of each school and to an information desk at the administrative building was identified as a basic need. In this way, a visitor could obtain information as to the accessibility of other portions of the facility.

Plans of the schools and administrative facilities were examined to determine which rooms and spaces were already fundamentally accessible or required a minimum of modification, and which other rooms or spaces needed modification to provide the minimum number of locations that would accommodate all services and activities. These rooms and spaces, as well as the front office, were then connected to parking and other points of arrival via the most direct path of travel. Barriers that interfered with the identified path of travel and with the rooms and spaces served became clear subjects for structural modification.

**Instances of Undue Burden.** Although the ADA cites undue burden as an acceptable reason to circumvent certain accessibility issues, it does not give specific regulations for the determination of what constitutes undue burden. Modification of all identified discrepancies constitutes an undue financial burden, but East Side Union High School District is interested in providing the maximum accessibility possible to its facilities for disabled individuals. As a result, the

ESUHSD Transition Plan does not specifically identify instances of undue burden, although some types of barriers (such as sloping walks dictated by topography) would likely qualify for this classification. Discrepancies that offer considerable financial or administrative difficulty have been included in a group of barriers described as “demand response” issues in Phase 4, which will be addressed when the need is identified by specific individuals (public or staff).

**Alternate Solutions.** The best solution to any physical modification made to achieve accessibility is usually to meet the specifications outlined in the ADA Architectural Guidelines (ADAAG). However, these solutions are often costly, and it is not always feasible for an agency to meet ADAAG specifications, especially when there are numerous instances of barriers in a single facility. In such cases, it may be possible to provide accessibility through "equivalent facilitation" or a next-best solution that is financially, or administratively, feasible. For example, drinking fountains are often fitted with a spout. If a fountain was located in numerous classrooms, it would be unrealistic to modify every sink, including hardware, cabinetry, and fountain spout. A certain number will be modified as needed to achieve full accessibility, but the remaining ones could provide some measure of accessibility by having a paper-cup dispenser installed next to the sink. *It is ESUHSD's policy to reconsider the proposed solution for any particular barrier at any time that it has been identified as potentially inadequate or inappropriate for the particular needs of a specific user.*

**Prioritization of Barrier Removal.** Since not all barriers can be removed simultaneously and, in fact, not all barriers will be removed, those barriers scheduled for removal were prioritized. Prioritization was based on ADA recommendations, specific needs identified by the above process, and planned construction of modernization work at each campus. The Department of Justice (DOJ), in its ADA documents, recommends priorities for barrier removal in the following order:

1. Curb cuts where pedestrian ways cross curbs,
2. Path of travel to and through a main entrance,
3. Access to essential goods and services,
4. Access to sanitary facilities, and
5. Other facilities access issues.

In addition, the DOJ states "a public entry shall give priority to those methods that offer services, programs, and activities to qualified individuals with disabilities in the most integrated setting appropriate" (§35.150(b)(1)).

ESUHSD has identified that a certain number of each of the items listed by the DOJ needs to be provided at each school or administrative facility. Barriers along the identified path of travel

received a higher priority for removal than those not along the to-be-accessible path of travel, and are scheduled for removal at some time during the transition period. Of the barriers along this path of travel at each facility, those high on the DOJ list received a higher priority for removal than those low on the DOJ list.

*Also effecting the prioritization of barrier removal is the phasing of the modernization projects at each of the ESUHSD facilities.* All ADA work that can be scheduled to occur during the modernization work on site will be incorporated into the modernization scope of work. This will help to reduce the on-site construction activities and avoid construction of work that may have to be removed later. Because the District will be modernizing all of its campuses based on the successful results of Measure G, projects will be phased over the period of the bond measure.

With regard to the identification of demand-response items in Phase 4, good communication is needed between schools and the Facilities Projects Department. School personnel are in the best position to know of specific needs, as well as changes in classroom uses, and should contact the Facilities Projects Department personnel so that they can provide any modifications, including the removal of access barriers, needed. When a student with specific needs enrolls in a school, the Facilities Projects Department should be notified so that any required modifications can be made. Solutions for improvement of the process used by appropriate administrators to keep informed of changing needs will be developed in the Self-Evaluation process.

**Schedule for Implementation.** ESUHSD's implementation schedule consists of four phases: Phase 1 (highest priority), Phase 2, Phase 3, and Phase 4 (demand response and lowest priority). For each facility, the barriers to be removed during each of the four phases in the transition period have been identified in the implementation tables, which are located in the next section.

### **Public Forum**

As part of the transition planning process and as outlined by the ADA, ESUHSD provided a Public Forum on March 10, 2005, to which members of the public were invited. Notice of the meeting was issued in the School Board meeting agenda that was advertised at the Education Center and on the District's website <[www.esuhd.org/board](http://www.esuhd.org/board)>. ESUHSD also notified the local accessibility organization of the availability of the Transition Plan at the East Side Union High School District offices, which are located at 830 North Capitol Avenue, San Jose, California 95133.

At the meeting, ESUHSD officials and consultants described the intent, methods, and goals of the transition planning process. Attendees were given the opportunity to examine a rough draft of the implementation tables. Details of the comments and recommendations of the attendees are provided in the minutes of the meeting and may be obtained from the District. *The Transition Plan was adopted and approved by the School Board on March 10, 2005.*

### **How To Use This Transition Plan**

As stated above, the Transition Plan is designed to be a living document that can attest to the completion of barrier removals and that can respond to changing needs during and after the transition period. It is recommended that one copy of the Transition Plan be used to record all completed modifications, changes in priority and/or schedule, and reasons for changes from the original schedule.

A "Completed Modifications Form" can be used to keep track of specific modifications. This form has columns to record the name of the school, discrepancy item number, number of items completed, date completed, estimated cost, other comments, and initial of individual tracking the modification.

Changes to prioritization and schedule dates should be made on the implementation tables and keyed to notes on a separate sheet that explain why the changes were made. The "Changes in Priorities to Implementation Table" is a form that can be used.

*Samples of these two forms are located in the Appendix.*

The more documentation kept on how and why implementation of the Transition Plan proceeded the way it did, the better.

### **Maintenance**

The ADA requires not only that accessibility to facilities is achieved, but also that it be maintained. Normal wear and tear to facilities can result in the recurrence of old barriers and the emergence of new ones. Something as simple as the growth of a tree root can result in surface irregularities in a sidewalk that could prevent a wheelchair user from passing or could present a serious hazard to a visually or mobility-impaired person. The ADA guidelines do not specifically require that maintenance issues are addressed in the Transition Plan, but a table of potential problems and solutions has been included. In most cases, the potential problems included in the maintenance list can be resolved by a facility's own maintenance staff with a minimum of equipment and without the acquisition of costly materials.

**Responsible Official**

The ESUHSD official responsible for implementation of this Transition Plan is:

Alan Garofalo, Director of Facilities, Bond Management  
 East Side Union High School District  
 830 North Capitol Avenue  
 San Jose, California 95133  
 Telephone: 408-347-5100  
 Fax: 408-347-5115  
 garofaloa@esuhsd.org

All comments, input, and requests with regard to the implementation of this Transition Plan should be directed to Mr. Garofalo.

**Summary of Accessibility Survey Questions**

The following chart summarizes the terminology used to gather information for the accessibility survey of East Side Union High School District facilities. The statement of probable cost in this Transition Plan is based on survey information, field experience, cost information from Lee Saylor, Inc., and published references. *Costs are provided for budgetary purposes only and due to unforeseeable physical configurations may result in an additional cost of as much as 20 percent.*

No.	Area of Non-compliance	Survey Question	Unit Cost	Action Required
1	Parking	How many <i>new accessible parking</i> spaces are needed (one for every 25 spaces; 1:8 van accessible)?	\$3,649	Install new accessible parking space
2	Parking	How many <i>existing</i> accessible spaces need to be relocated or modified because: <ul style="list-style-type: none"> <li>• They are <i>not</i> near a main entrance,</li> <li>• They are <i>not</i> at least 9 feet wide and 18 feet long, with an access aisle at least 5 feet wide (or 8 feet wide for vans) and 18 feet long, or</li> <li>• They need to be moved so that multiple accessible entrances are served?</li> </ul>	\$3,649	Relocate and/or restripe accessible parking spaces
3	Parking	How many <i>passenger loading zones</i> do not have a passenger-side access aisle at least 5 feet wide and 20 feet long?	\$10,942	Install accessible passenger loading zones
4	Parking	How many <i>signs</i> (one at/near lot entrance and one at head of each accessible space or loading zone) need to be provided (if absent) or replaced (if damaged or wrong configuration)?	\$363	Install parking sign



No.	Area of Non-compliance	Survey Question	Unit Cost	Action Required
5	Parking	How many clearly defined <i>crosswalks</i> must be provided for an accessible path of travel crossing a vehicular way?	\$2,191	Provide crosswalk at vehicular crossing way
6	Parking	How many <i>loading zones</i> require a "no parking" sign with painted 12-inch high letters?	\$478	Provide "no parking" signs at loading zone
7	Curb Cuts	How many <i>curb cuts or curb ramps</i> are needed (i.e., wherever the path of travel crosses a curb or other change in level no greater than 6 inches)? These are not required in loading zones.	\$3,793	Install new curb cut or curb ramp
8	Curb Cuts	How many <i>existing curb cuts</i> require modification because the slope exceeds 1:12 (8.3%), or flared sides exceed 1:12 (or 1:10 [10%] if a 48-inch-deep landing is provided at the top)?	\$3,793	Modify existing curb cut
9	Sidewalks	How many <i>linear feet of sidewalk</i> at least 48 inches wide are needed to provide at least one accessible path of travel to all exterior elements and spaces on the site?	\$75	Install 48" wide sidewalk (per linear foot)
10	Sidewalks	How many linear feet of required accessible <i>sidewalk</i> are sloped more than 1:20 (5%) for more than 30 feet, more than 1:50 (2%) in cross slope, or more than 1:12 (8.3%) for any distance?	\$144	Replace existing sidewalk for path modification (per linear feet)
11	Sidewalks	How many <i>directional signs</i> are needed (with one at each junction) to indicate the accessible path of travel to the building or facility entrance?	\$294	Install directional sign
12	Ramps	How many <i>new permanent ramps</i> are needed to make all entrances and all other level changes that are greater than 6 inches accessible?	\$22,610	Install new permanent ramp with required handrails
13	Ramps	How many <i>new portable ramps (only with portable structures)</i> are needed to make all entrances and all other level changes that are greater than 6 inches accessible?	\$9,483	Install new portable ramp with required handrails
14	Stairs	How many <i>permanent stairs</i> require replacement because they have treads less than 11 inches deep, risers more than 7 inches high, open risers, square-nose risers, or widths less than 44 inches (36 inches when occupancy load is 49 people or less)?	\$8,025	Install new permanent stairs with contrasting warning stripes
15	Stairs	How many <i>portable stairs</i> require replacement because they have treads less than 11 inches deep, risers more than 7 inches high, open risers, square-nose risers, or widths less than 44 inches (36 inches when occupancy load is 49 people or less)?	\$2,917	Install new portable stairs

No.	Area of Non-compliance	Survey Question	Unit Cost	Action Required
16	Stairs	How many stairs require minor modification because they <i>do not</i> have round-grip <i>handrails</i> (1-1/4 inch to 1-1/2 inch in diameter) on both sides that are <i>not</i> 34 inches high (24 inches for children)?	\$1,459	Install new required handrails for stairs
17	Stairs	How many <i>handrail extensions</i> require minor modification because they do not extend 24 inches from face of tread at bottom of stair (or tread width plus 12 inches) and 12 inches at face of tread at top of stair?	\$975	Install handrail extensions at stairs
18	Doors	How many doors do <i>not</i> have at least <b>32 inches clear</b> width from the face of the open door to the opposite stop?	\$2,191	Install new door for required width
19	Doors	How many doors do <i>not</i> have level wheelchair <i>maneuvering clearance</i> provided on both sides?	\$6,272	Provide level floor and wall clearances on both sides of door
20	Doors	How many doors do <i>not</i> have easily operable <i>hardware</i> (push-bar or lever-type if latching type) mounted between 30 and 44 inches high or 10 inches of continuously smooth surface (kickplate)?	\$363	Install new hardware (handle, kickplate, etc.) per door
21	Doors	How many doors require a <i>threshold modification</i> because they have an abrupt change in level that is over 1/2 inch?	\$363	Install new or modify threshold
22	Elevators	How many <i>existing elevators</i> (1 to 3 stops) require replacement because they have an interior less than 68 inches wide (80 inches wide with center opening doors) and 51 inches deep, or a doorway less than 36 inches wide?	\$123,976	Remodel elevator, 1-3 stops (enlarge shaft, hall call buttons)
23	Elevators	How many existing elevators require modification because: <ul style="list-style-type: none"> <li>The <i>in-cab controls</i> are more than 54 inches high,</li> <li>The <i>hall-call buttons</i> are more than 42 inches high (on center),</li> <li>Visible and audible signals must be provided?</li> </ul>	\$2,917	Install new button panel(s) and/or visible/audible signals
24	Elevators	How many <i>new elevators</i> (1 to 3 stops) are needed?	\$182,318	Install new elevator, cab and shaft (1 to 3 stops)
25	Corridors	How many linear feet of <i>corridors</i> require modification because they are less than 44 inches wide?	\$876	Remodel corridor to 44" minimum width (per linear foot)
26	Counters	How many <i>new counters</i> are required so that there is one counter space at least 36 inches long, 17 inches of clear space on each side in depth, and no more than 34 inches high in each room in which counters are provided?	\$2,191	Install new 36"-long section of accessible counter

No.	Area of Non-compliance	Survey Question	Unit Cost	Action Required
27	Assembly Rooms	How many 66 x 60 <i>wheelchair spaces</i> (to accommodate two users) are needed to meet the following requirements: <ul style="list-style-type: none"> <li>• One for the first 25 <i>fixed</i> seats provided.</li> <li>• One for the next 25.</li> <li>• Two for the next 250.</li> <li>• Two for the next 200.</li> <li>• One additional space for each additional 100.</li> </ul>	\$1,095	Provide wheelchair seating space in assembly room
28	Assembly Rooms	How many <i>assistive listening systems with signage</i> are required for assembly rooms with fixed seats that have an amplified sound system or that can accommodate at least 50 people?	\$8,025	Install assistive listening system with signage
29	Assembly Rooms	How many rooms have inaccessible <i>stages or platforms</i> (without required 1:12 ramp or platform lift access)?	\$17,503	Install platform lift to provide stage access (0 to 5 feet)
30	Assembly Rooms	How many <i>assembly room aisles</i> are less than 36 inches wide if serving one side, or 44 inches plus 1-1/2 inch times length/5 feet if serving two sides?	\$4,376	Remove aisle seats and refinish floor to widen aisle
31	Sanitary Facilities	How many toilet rooms do <i>not</i> have an accessible <i>path of travel</i> (44 inches wide, 60-inch diagonal turning space, and required fixture clearances)?	\$21,878	Remodel toilet room for accessible path of travel
32	Sanitary Facilities	How many toilet rooms require <i>major modification</i> because they do not have: <ul style="list-style-type: none"> <li>• An accessible <i>water closet</i> (17 to 19 inches high, 18 inches minimum on center from wall, 48 inches minimum in front of toilet for front opening stall, and 60 inches minimum in front of toilet for side opening stall);</li> <li>• A <i>stall door</i> that swings out or a side entry door that is 34 inches minimum with self-closing door unless oversized;</li> <li>• An accessible <i>urinal</i> (17 inches maximum height, 14 inches minimum depth, and 30-inch by 48-inch clear space); or</li> <li>• An accessible <i>lavatory</i> (34-inch maximum height, 27-inch minimum knee space extending 8 inches under lavatory, and 30-inch by 48-inch clear space)?</li> </ul>	\$35,000	Install accessible water closet, stall door, urinal, lavatory

No.	Area of Non-compliance	Survey Question	Unit Cost	Action Required
33	Sanitary Facilities	How many toilet rooms <i>minor modification</i> because they: <ul style="list-style-type: none"> <li>• Have <i>protruding shelves</i>,</li> <li>• Do not have required <i>toilet grab bars</i> at back (36 inches long) and side (42 inches) that are 33 inches on center,</li> <li>• Do not have required <i>insulation</i> under lavatories,</li> <li>• Do not have required <i>handles or sensors</i>, or</li> <li>• Do not have <i>accessories</i> at the required maximum or minimum heights?</li> </ul>	\$5,800	Install/modify grab bars, insulation, accessories
34	Sanitary Facilities	How many <i>new accessible shower stalls</i> (36 x 36 inches or 30 x 60 inches) are required because the existing individual stalls are too small? One accessible stall is required for every 20 provided.	\$15,318	Install new accessible shower stall
35	Sanitary Facilities	How many <i>existing shower stalls</i> (36 x 36 inch or 30 x 60 inch) can be <i>modified</i> by removing the curb and installing grab bars and a folding seat? One accessible stall is required for every 20 provided.	\$3,649	Modify existing shower for access
36	Drinking Fountains	How many <i>drinking fountains</i> need to be replaced because they: <ul style="list-style-type: none"> <li>• Have a bubbler higher than 36 inches (30 inches for children),</li> <li>• Lack knee space 27 inches high,</li> <li>• Protrude less than 18 or more than 19 inches,</li> <li>• Are unprotected by alcove or wings, and/or</li> <li>• Are not in an accessible path of travel?</li> </ul>	\$2,623	Install accessible drinking fountain (wing walls, rails, etc.)
37	Drinking Fountains	How many classrooms require accessible <i>drinking fountains/hardware</i> ?	\$548	Install accessible drinking fountain/hardware
38	Telephones	How many <i>public telephones</i> have operable parts more than 54 inches high (44 inches for children)?	\$732	Re-position existing public telephone
39	Telephones	If public telephones are provided and there are at least 4 public telephones on the site, how many <i>TDD's</i> are needed? One is the maximum required.	\$1,020	Install public text telephone
40	Visual Alarms	How many <i>visual alarm appliances</i> are needed? One within 50 feet and visible from any occupied location is required.	\$1,020	Install visual alarm (per appliance)
41	Dining Facilities	How many cafeteria <i>service aisles</i> are less than 36 inches wide (or less than 42 inches if serving both sides)?	\$8,025	Move counters, bollards, or other restrictions in aisles
42	Dining Facilities	How many tray slides and <i>servicing counters</i> are more than 34 inches high?	\$8,025	Replace or modify servicing counters

No.	Area of Non-compliance	Survey Question	Unit Cost	Action Required
43	Dining Facilities	How many <i>table spaces</i> are required so that 1 in 20 are wheelchair accessible (i.e., 28 to 34 inches high, with knee space 27 inches high, 19 inches deep, and 30 inches wide)?	\$1,897	Provide accessible table seating (per space)
44	Sinks	How many rooms with <i>sinks</i> and/or <i>sinks within counters</i> require modification because they do not have: <ul style="list-style-type: none"> <li>An accessible sink (i.e., maximum of 34 inches high and with knee space 27 inches high, 30 inches wide, and 19 inches deep beneath);</li> <li>An accessible sink with counter maximum height of 34 inches and maximum reach depth of 24 inches; and</li> <li>Sink faucets with single handle, lever, or sensor.</li> </ul>	\$4,376	Provide accessible sink
45	Sinks	How many <i>sink faucets or hardware</i> require minor modification to be made accessible?	\$490	Install accessible sink faucet/hardware
46	Workstations	How many accessible <i>workstations</i> are required because existing ones are higher than 34 inches and/or lacking minimum knee space (27 inches high x 30 inches wide x 19 inches deep)? One in 20 of each type or group is required to be accessible.	\$4,376	Install new or modify existing workstation
47	Recreation	How many <i>swimming pool lifts</i> are required?	\$5,834	Install pool-entry device
48	Recreation	How many pieces of accessible <i>playground/athletic equipment</i> are required?	\$15,318	Install accessible playground/athletic equipment
49	Recreation	How many square feet of approved <i>playground surface</i> is required?	\$12	Resurface playground/athletic area (per square foot)
50	Aisles	How many <i>main aisles</i> are less than 44 inches and <i>other aisles</i> are less than 36 inches wide?	\$8,025	Relocate or replace existing shelving units in aisles
51	Hazard Warnings	How many stairs lack contrasting color <i>warning strips</i> at top and bottom (or on all treads, if exterior)?	\$294	Add warning strips to stair treads (per 5 treads)
52	Hazard Warnings	How many abrupt drops greater than 4 inches (other than curbs) lack a <i>guard curb or textured warning</i> along the edge?	\$35	Install guard curb or wheel stop (per linear feet)
53	Hazard Warnings	How many <i>objects protrude</i> more than 4 inches into a path of travel between 27 and 80 inches above the travel surface?	\$513	Install wing walls, rails, or textured warning surface
54	Signage	How many <i>exit/identification signs</i> need to be replaced with accessible signage (i.e., raised letters, Braille, etc.)?	\$200	Provide or relocate tactile exit/identification signage
55	Signage	How many <i>sanitary facilities</i> require shaped and/or tactile signage on and/or next to the door to meet both ADA and T-24 requirements?	\$363	Provide or relocate tactile sanitary facility signage

No.	Area of Non-compliance	Survey Question	Unit Cost	Action Required
56	Signage	How many <i>ticket booths</i> require signage to inform patrons of available accessible seating and listening devices?	\$363	Provide ALS-available signage at a ticket booth
57	Light Switches	How many <i>light switches</i> are mounted above 48 inches for front approach or 54 inches for side approach?	\$1,000	Provide accessible light switches

---

# **Barrier Removal Implementation**

---

**BARRIER REMOVAL IMPLEMENTATION**

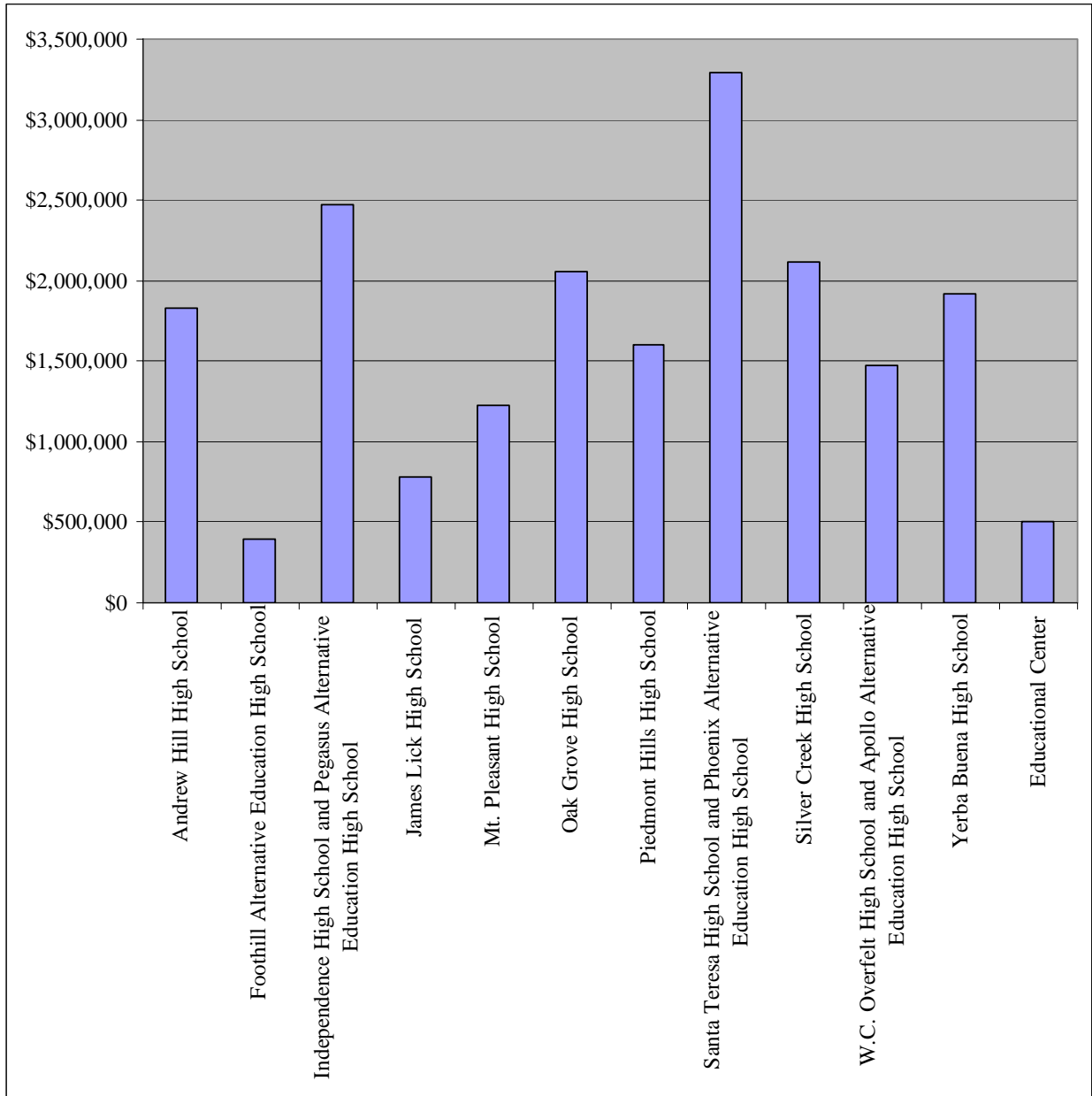
The following implementation tables include, for each school or administrative facility, a list of the barriers identified, by type, with the number of occurrences scheduled for removal and the amount scheduled for each phase of the transition period.

**Summary of Barrier Removal Implementation by Phases**

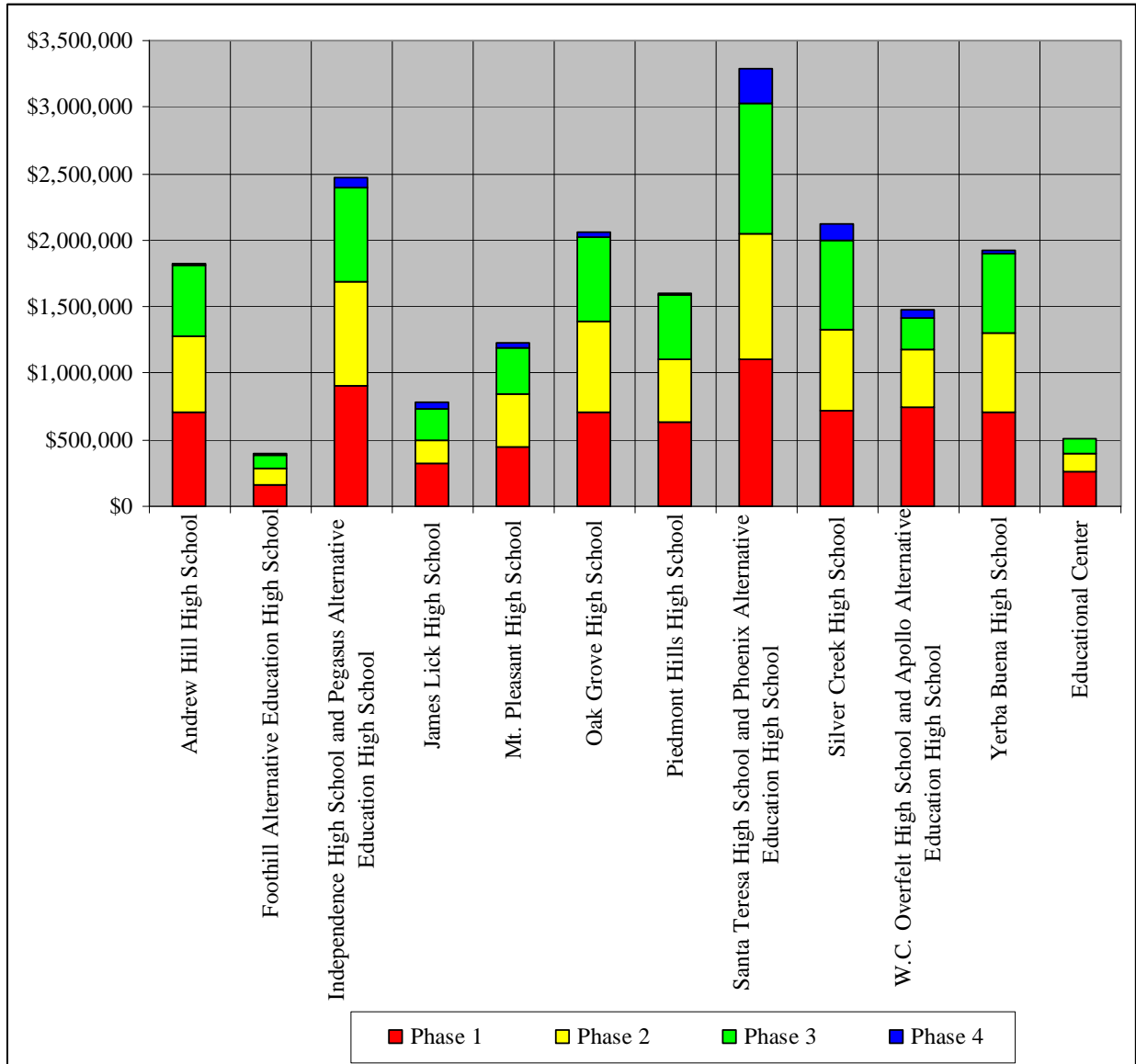
<b>Name of School</b>	<b>Total Cost</b>	<b>Phase 1</b>	<b>Phase 2</b>	<b>Phase 3</b>	<b>Phase 4</b>
Andrew Hill High School	\$1,824,308	\$703,043	\$570,320	\$536,360	\$14,585
Foothill Alternative Education High School	\$396,367	\$158,176	\$124,719	\$95,965	\$17,508
Independence High School and Pegasus Alternative Education High School	\$2,471,586	\$900,123	\$790,026	\$699,738	\$81,700
James Lick High School	\$778,239	\$320,003	\$181,038	\$232,217	\$44,981
Mt. Pleasant High School	\$1,224,346	\$451,054	\$388,096	\$357,477	\$27,718
Oak Grove High School	\$2,054,742	\$702,206	\$693,081	\$631,736	\$27,718
Piedmont Hills High School	\$1,604,776	\$631,380	\$476,489	\$480,857	\$16,050
Santa Teresa High School and Phoenix Alternative Education High School	\$3,289,910	\$1,099,173	\$949,147	\$981,182	\$260,409
Silver Creek High School	\$2,118,519	\$721,514	\$611,455	\$660,085	\$125,464
W.C. Overfelt High School and Apollo Alternative Education High School	\$1,473,915	\$749,477	\$430,584	\$237,691	\$56,165
Yerba Buena High School	\$1,922,212	\$706,657	\$597,734	\$588,650	\$29,170
Educational Center	\$509,073	\$262,650	\$131,728	\$109,954	\$4,742
<b>TOTAL OF ALL SCHOOLS</b>	<b>\$19,667,993</b>	<b>\$7,405,456</b>	<b>\$5,944,417</b>	<b>\$5,611,912</b>	<b>\$706,209</b>



Overview of Total Barrier Removal Implementation by School



Overview of Phases by School



### **Photographs of Typical Barriers**

The following photographs illustrate typical barriers that were identified in the AIA Survey, which was completed in August of 2003.



Nonconforming ramp at W.C. Overfelt High School.



Nonconforming disabled access parking at the Educational Center parking lot.



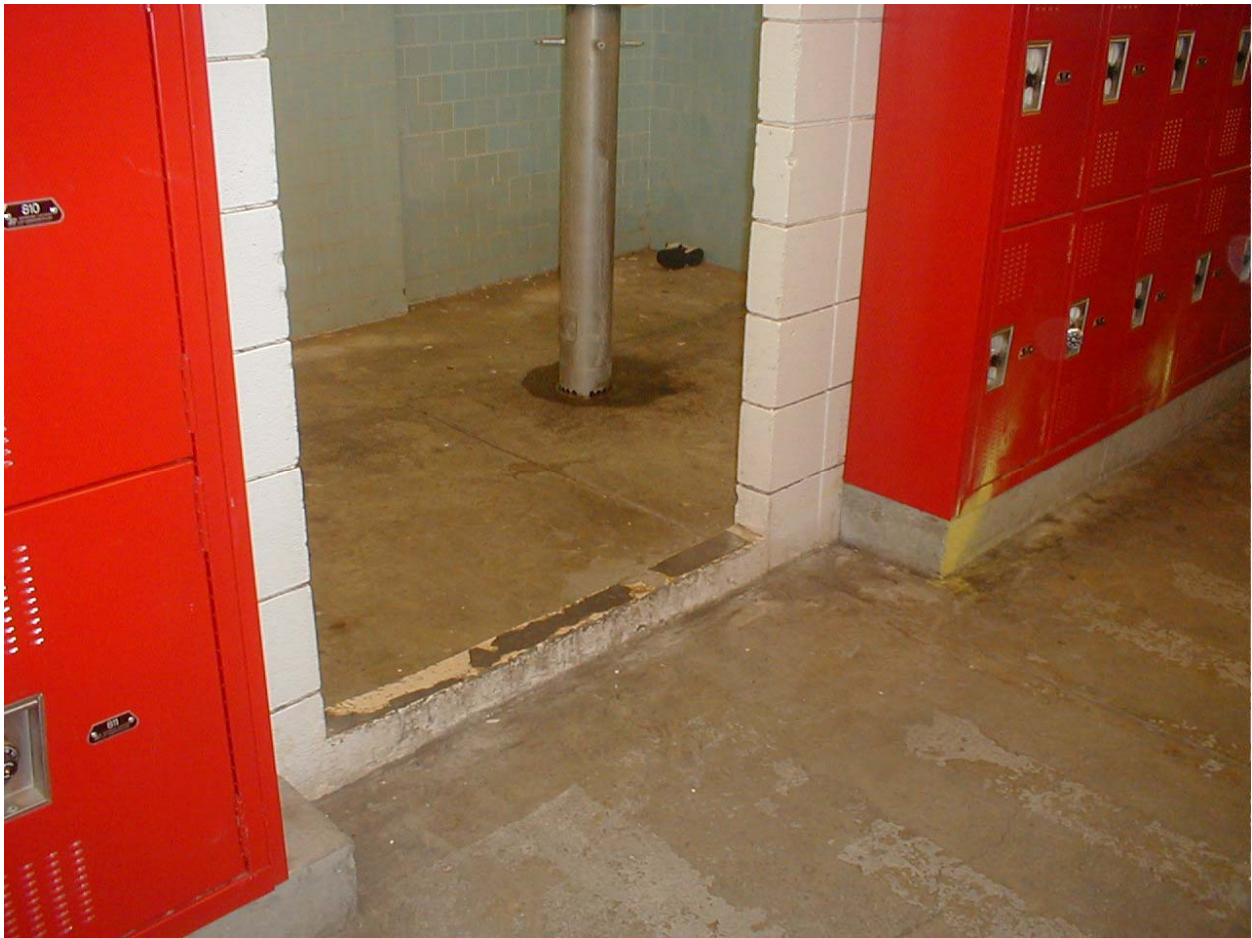


Nonconforming stair with no wheelchair access at main entry of Mt. Pleasant High School.



Nonconforming drinking fountain at Independence High School.





Nonconforming shower in locker room at Mt. Pleasant High School.



Nonconforming stair at library of Mt. Pleasant High School.





Nonconforming ramp at library of Mt. Pleasant High School.



Nonconforming exit door at Mt. Pleasant High School.

**Patrick Sullivan Associates**  
**EAST SIDE UNION HIGH SCHOOL DISTRICT ADA TRANSITION PLAN**  
**Barrier Removal Implementation**

No.	Type of Barrier	Unit Cost	Items	Total	Phase 1	Phase 2	Phase 3	Phase 4	Description of Correction
<b>Andrew Hill High School</b>									
1	Parking	\$3,649	3	\$10,947	\$10,947.00				Install new accessible parking space
2	Parking	\$3,649	8	\$29,192	\$29,192.00				Relocate and/or restripe accessible parking spaces
3	Parking	\$10,942	4	\$43,768	\$43,768.00				Install accessible passenger loading zones
4	Parking	\$363	6	\$2,178	\$2,178.00				Install parking sign
5	Parking	\$2,191	4	\$8,764	\$8,764.00				Provide crosswalk at vehicular crossing way
7	Curb Cuts	\$3,793	1	\$3,793	\$3,793.00				Install new curb cut or curb ramp
9	Sidewalks	\$75	500	\$37,500	\$12,500.00	\$12,500.00	\$12,500.00		Install 48" wide sidewalk (per linear foot)
10	Sidewalks	\$144	150	\$21,600	\$21,600.00				Replace existing sidewalk for path modification (per linear feet)
11	Sidewalks	\$294	10	\$2,940	\$2,940.00				Install directional sign
12	Ramps	\$22,610	3	\$67,830	\$22,610.00	\$22,610.00	\$22,610.00		Install new permanent ramp with required handrails
13	Ramps	\$9,483	9	\$85,347	\$28,449.00	\$28,449.00	\$28,449.00		Install new portable ramp with required handrails
14	Stairs	\$8,025	6	\$48,150	\$24,075.00	\$24,075.00			Install new permanent stairs with contrasting warning stripes
15	Stairs	\$2,917	1	\$2,917				\$2,917.00	Install new portable stairs
19	Doors	\$6,272	98	\$614,656	\$204,885.33	\$204,885.33	\$204,885.33		Provide level floor and wall clearances on both sides of door

**Patrick Sullivan Associates  
EAST SIDE UNION HIGH SCHOOL DISTRICT ADA TRANSITION PLAN  
Barrier Removal Implementation**

No.	Type of Barrier	Unit Cost	Items	Total	Phase 1	Phase 2	Phase 3	Phase 4	Description of Correction
20	Doors	\$363	216	\$78,408	\$26,136.00	\$26,136.00	\$26,136.00		Install new hardware (handle, kickplate, etc.) per door
21	Doors	\$363	23	\$8,349	\$2,783.00	\$2,783.00	\$2,783.00		Install new or modify threshold
24	Elevators	\$182,318	1	\$0	Building is being demolished				Install new elevator, cab and shaft (1 to 3 stops)
26	Counters	\$2,191	25	\$54,775	\$27,387.50	\$27,387.50			Install new 36"-long section of accessible counter
28	Assembly Rooms	\$8,025	2	\$16,050		\$8,025.00	\$8,025.00		Install assistive listening system with signage
29	Assembly Rooms	\$17,503	1	\$17,503			\$17,503.00		Install platform lift to provide stage access (0 to 5 feet)
32	Sanitary Facilities	\$35,000	8	\$280,000	\$93,333.33	\$93,333.33	\$93,333.33		Install accessible water closet, stall door, urinal, lavatory
33	Sanitary Facilities	\$5,800	2	\$11,600	\$3,866.67	\$3,866.67	\$3,866.67		Install/modify grab bars, insulation, accessories
34	Sanitary Facilities	\$15,318	2	\$30,636	\$10,212.00	\$10,212.00	\$10,212.00		Install new accessible shower stall
36	Drinking Fountains	\$2,623	12	\$31,476	\$10,492.00	\$10,492.00	\$10,492.00		Install accessible drinking fountain (wing walls, rails, etc.)
40	Visual Alarms	\$1,020	99	\$100,980	\$33,660.00	\$33,660.00	\$33,660.00		Install visual alarm (per appliance)
42	Dining Facilities	\$8,025	2	\$16,050	\$16,050.00				Replace or modify serving counters
44	Sinks	\$4,376	15	\$65,640	\$21,880.00	\$21,880.00	\$21,880.00		Provide accessible sink
45	Sinks	\$490	1	\$490	\$490.00				Install accessible sink faucet/hardware
47	Recreation	\$5,834	2	\$11,668				\$11,668.00	Install pool-entry device

**Patrick Sullivan Associates  
EAST SIDE UNION HIGH SCHOOL DISTRICT ADA TRANSITION PLAN  
Barrier Removal Implementation**

No.	Type of Barrier	Unit Cost	Items	Total	Phase 1	Phase 2	Phase 3	Phase 4	Description of Correction
50	Aisles	\$8,025	3	\$24,075	\$8,025.00	\$8,025.00	\$8,025.00		Relocate or replace existing shelving units in aisles
53	Hazard Warnings	\$513	2	\$1,026	\$1,026.00				Install wing walls, rails, or textured warning surface
54	Signage	\$200	180	\$36,000	\$12,000.00	\$12,000.00	\$12,000.00		Provide or relocate tactile exit/identification signage
57	Light Switches	\$1,000	60	\$60,000	\$20,000.00	\$20,000.00	\$20,000.00		Provide accessible light switches
	<b>Total</b>			<b>\$1,824,308</b>	<b>\$703,043</b>	<b>\$570,320</b>	<b>\$536,360</b>	<b>\$14,585</b>	

Patrick Sullivan Associates  
**EAST SIDE UNION HIGH SCHOOL DISTRICT ADA TRANSITION PLAN**  
**Barrier Removal Implementation**

No.	Type of Barrier	Unit Cost	Items	Total	Phase 1	Phase 2	Phase 3	Phase 4	Description of Correction
<b>Foothill Alternative Education High School</b>									
1	Parking	\$3,649	3	\$10,947	\$10,947				Install new accessible parking space
2	Parking	\$3,649	1	\$3,649	\$3,649				Relocate and/or restripe accessible parking spaces
3	Parking	\$10,942	1	\$10,942	\$10,942				Install accessible passenger loading zones
6	Parking	\$478	1	\$478	\$478				Provide "no parking" signs at loading zone
7	Curb Cuts	\$3,793	1	\$3,793	\$3,793				Install new curb cut or curb ramp
9	Sidewalks	\$75	300	\$22,500	\$11,250	\$11,250			Install 48" wide sidewalk (per linear foot)
11	Sidewalks	\$294	5	\$1,470	\$1,470				Install directional sign
13	Ramps	\$9,483	1	\$9,483				\$9,483	Install new portable ramp with required handrails
20	Doors	\$363	74	\$26,862	\$8,954	\$8,954	\$8,954		Install new hardware (handle, kickplate, etc.) per door
21	Doors	\$363	54	\$19,602	\$6,534	\$6,534	\$6,534		Install new or modify threshold
28	Assembly Rooms	\$8,025	1	\$8,025				\$8,025	Install assistive listening system with signage
31	Sanitary Facilities	\$21,878	5	\$109,390	\$36,463	\$36,463	\$36,463		Remodel toilet room for accessible path of travel
32	Sanitary Facilities	\$35,000	1	\$35,000	\$11,667	\$11,667	\$11,667		Install accessible water closet, stall door, urinal, lavatory
40	Visual Alarms	\$1,020	62	\$63,240	\$21,080	\$21,080	\$21,080		Install visual alarm (per appliance)

Patrick Sullivan Associates

**EAST SIDE UNION HIGH SCHOOL DISTRICT ADA TRANSITION PLAN**

**Barrier Removal Implementation**

No.	Type of Barrier	Unit Cost	Items	Total	Phase 1	Phase 2	Phase 3	Phase 4	Description of Correction
44	Sinks	\$4,376	4	\$17,504	\$8,752	\$8,752			Provide accessible sink
46	Workstations	\$4,376	4	\$17,504	\$8,752	\$8,752			Install new or modify existing workstation
54	Signage	\$200	54	\$10,800	\$3,600	\$3,600	\$3,600		Provide or relocate tactile exit/identification signage
55	Signage	\$363	6	\$2,178	\$2,178				Provide or relocate tactile sanitary facility signage
57	Light Switches	\$1,000	23	\$23,000	\$7,667	\$7,667	\$7,667		Provide accessible light switches
	<b>Total</b>			<b>\$396,367</b>	<b>\$158,176</b>	<b>\$124,719</b>	<b>\$95,965</b>	<b>\$17,508</b>	

**Patrick Sullivan Associates  
EAST SIDE UNION HIGH SCHOOL DISTRICT ADA TRANSITION PLAN  
Barrier Removal Implementation**

No.	Type of Barrier	Unit Cost	Items	Total	Phase 1	Phase 2	Phase 3	Phase 4	Description of Correction
<b>Independence High School and Pegasus Alternative Education High School</b>									
1	Parking	\$3,649	1	\$3,649	\$3,649				Install new accessible parking space
2	Parking	\$3,649	20	\$72,980	\$72,980				Relocate and/or restripe accessible parking spaces
3	Parking	\$10,942	2	\$21,884	\$21,884				Install accessible passenger loading zones
4	Parking	\$363	20	\$7,260	\$7,260				Install parking sign
5	Parking	\$2,191	7	\$15,337	\$15,337				Provide crosswalk at vehicular crossing way
7	Curb Cuts	\$3,793	13	\$49,309	\$24,655	\$24,655			Install new curb cut or curb ramp
8	Curb Cuts	\$3,793	2	\$7,586	\$7,586				Modify existing curb cut
9	Sidewalks	\$75	1,000	\$75,000	\$25,000	\$25,000	\$25,000		Install 48" wide sidewalk (per linear foot)
10	Sidewalks	\$144	1,000	\$144,000	\$48,000	\$48,000	\$48,000		Replace existing sidewalk for path modification (per linear feet)
11	Sidewalks	\$294	40	\$11,760	\$5,880	\$5,880			Install directional sign
12	Ramps	\$22,610	5	\$113,050	\$37,683	\$37,683	\$37,683		Install new permanent ramp with required handrails
13	Ramps	\$9,483	4	\$37,932				\$37,932	Install new portable ramp with required handrails
14	Stairs	\$8,025	7	\$56,175	\$18,725	\$18,725	\$18,725		Install new permanent stairs with contrasting warning stripes
16	Stairs	\$1,459	20	\$29,180	\$29,180				Install new required handrails for stairs



**Patrick Sullivan Associates  
EAST SIDE UNION HIGH SCHOOL DISTRICT ADA TRANSITION PLAN  
Barrier Removal Implementation**

No.	Type of Barrier	Unit Cost	Items	Total	Phase 1	Phase 2	Phase 3	Phase 4	Description of Correction
18	Doors	\$2,191	3	\$6,573	\$6,573				Install new door for required width
19	Doors	\$6,272	3	\$18,816	\$9,408	\$9,408			Provide level floor and wall clearances on both sides of door
20	Doors	\$363	832	\$302,016	\$100,672	\$100,672	\$100,672		Install new hardware (handle, kickplate, etc.) per door
21	Doors	\$363	40	\$14,520	\$4,840	\$4,840	\$4,840		Install new or modify threshold
26	Counters	\$2,191	27	\$59,157	\$19,719	\$19,719	\$19,719		Install new 36"-long section of accessible counter
27	Assembly Rooms	\$1,095	18	\$19,710		\$19,710			Provide wheelchair seating space in assembly room
28	Assembly Rooms	\$8,025	4	\$32,100				\$32,100	Install assistive listening system with signage
29	Assembly Rooms	\$17,503	7	\$122,521		\$61,261	\$61,261		Install platform lift to provide stage access (0 to 5 feet)
32	Sanitary Facilities	\$35,000	10	\$350,000	\$116,667	\$116,667	\$116,667		Install accessible water closet, stall door, urinal, lavatory
33	Sanitary Facilities	\$5,800	7	\$40,600	\$13,533	\$13,533	\$13,533		Install/modify grab bars, insulation, accessories
34	Sanitary Facilities	\$15,318	2	\$30,636		\$30,636			Install new accessible shower stall
36	Drinking Fountains	\$2,623	15	\$39,345	\$13,115	\$13,115	\$13,115		Install accessible drinking fountain (wing walls, rails, etc.)
38	Telephones	\$732	2	\$1,464	\$1,464				Re-position existing public telephone
40	Visual Alarms	\$1,020	380	\$387,600	\$129,200	\$129,200	\$129,200		Install visual alarm (per appliance)
41	Dining Facilities	\$8,025	4	\$32,100	\$32,100				Move counters, bollards, or other restrictions in aisles

**Patrick Sullivan Associates  
EAST SIDE UNION HIGH SCHOOL DISTRICT ADA TRANSITION PLAN  
Barrier Removal Implementation**

No.	Type of Barrier	Unit Cost	Items	Total	Phase 1	Phase 2	Phase 3	Phase 4	Description of Correction
43	Dining Facilities	\$1,897	4	\$7,588	\$7,588				Provide accessible table seating (per space)
44	Sinks	\$4,376	35	\$153,160	\$51,053	\$51,053	\$51,053		Provide accessible sink
46	Workstations	\$4,376	2	\$8,752	\$8,752				Install new or modify existing workstation
47	Recreation	\$5,834	2	\$11,668				\$11,668	Install pool-entry device
51	Hazard Warnings	\$294	25	\$7,350	\$7,350				Add warning strips to stair treads (per 5 treads)
54	Signage	\$200	750	\$150,000	\$50,000	\$50,000	\$50,000		Provide or relocate tactile exit/identification signage
55	Signage	\$363	16	\$5,808	\$1,936	\$1,936	\$1,936		Provide or relocate tactile sanitary facility signage
57	Light Switches	\$1,000	25	\$25,000	\$8,333	\$8,333	\$8,333		Provide accessible light switches
	<b>Total</b>			<b>\$2,471,586</b>	<b>\$900,123</b>	<b>\$790,026</b>	<b>\$699,738</b>	<b>\$81,700</b>	

**Patrick Sullivan Associates**  
**EAST SIDE UNION HIGH SCHOOL DISTRICT ADA TRANSITION PLAN**  
**Barrier Removal Implementation**

No.	Type of Barrier	Unit Cost	Items	Total	Phase 1	Phase 2	Phase 3	Phase 4	Description of Correction
<b>James Lick High School</b>									
2	Parking	\$3,649	5	\$18,245	\$18,245				Relocate and/or restripe accessible parking spaces
3	Parking	\$10,942	1	\$10,942	\$10,942				Install accessible passenger loading zones
4	Parking	\$363	5	\$1,815	\$1,815				Install parking sign
5	Parking	\$2,191	2	\$4,382	\$4,382				Provide crosswalk at vehicular crossing way
6	Parking	\$478	3	\$1,434	\$1,434				Provide "no parking" signs at loading zone
7	Curb Cuts	\$3,793	4	\$15,172	\$15,172				Install new curb cut or curb ramp
9	Sidewalks	\$75	350	\$26,250	\$26,250				Install 48" wide sidewalk (per linear foot)
10	Sidewalks	\$144	10	\$1,440	\$1,440				Replace existing sidewalk for path modification (per linear feet)
13	Ramps	\$9,483	8	\$75,864	\$25,288		\$25,288		Install new portable ramp with required handrails
16	Stairs	\$1,459	3	\$4,377	\$1,459	\$1,459			Install new required handrails for stairs
18	Doors	\$2,191	30	\$65,730	\$21,910	\$21,910			Install new door for required width
19	Doors	\$6,272	5	\$31,360	\$10,453	\$10,453			Provide level floor and wall clearances on both sides of door
20	Doors	\$363	200	\$72,600	\$24,200	\$24,200			Install new hardware (handle, kickplate, etc.) per door
26	Counters	\$2,191	4	\$8,764	\$2,921	\$2,921			Install new 36"-long section of accessible counter

**Patrick Sullivan Associates  
EAST SIDE UNION HIGH SCHOOL DISTRICT ADA TRANSITION PLAN  
Barrier Removal Implementation**

No.	Type of Barrier	Unit Cost	Items	Total	Phase 1	Phase 2	Phase 3	Phase 4	Description of Correction
27	Assembly Rooms	\$1,095	10	\$10,950	\$3,650	\$3,650	\$3,650		Provide wheelchair seating space in assembly room
28	Assembly Rooms	\$8,025	2	\$16,050			\$8,025	\$8,025	Install assistive listening system with signage
29	Assembly Rooms	\$17,503	1	\$17,503			\$17,503		Install platform lift to provide stage access (0 to 5 feet)
31	Sanitary Facilities	\$21,878	6	\$131,268	\$43,756	\$43,756	\$43,756		Remodel toilet room for accessible path of travel
36	Drinking Fountains	\$2,623	3	\$7,869	\$2,623	\$2,623	\$2,623		Install accessible drinking fountain (wing walls, rails, etc.)
40	Visual Alarms	\$1,020	10	\$10,200	\$3,400	\$3,400	\$3,400		Install visual alarm (per appliance)
41	Dining Facilities	\$8,025	4	\$32,100	\$32,100				Move counters, bollards, or other restrictions in aisles
43	Dining Facilities	\$1,897	1	\$1,897	\$1,897				Provide accessible table seating (per space)
44	Sinks	\$4,376	15	\$65,640	\$21,880	\$21,880	\$21,880		Provide accessible sink
47	Recreation	\$5,834	2	\$11,668				\$11,668	Install pool-entry device
54	Signage	\$200	450	\$90,000	\$30,000	\$30,000	\$30,000		Provide or relocate tactile exit/identification signage
55	Signage	\$363	12	\$4,356	\$1,452	\$1,452	\$1,452		Provide or relocate tactile sanitary facility signage
56	Signage	\$363	1	\$363			\$363		Provide ALS-available signage at a ticket booth
57	Light Switches	\$1,000	40	\$40,000	\$13,333	\$13,333	\$13,333		Provide accessible light switches
	<b>Total</b>			<b>\$778,239</b>	<b>\$320,003</b>	<b>\$181,038</b>	<b>\$232,217</b>	<b>\$44,981</b>	

**Patrick Sullivan Associates**  
**EAST SIDE UNION HIGH SCHOOL DISTRICT ADA TRANSITION PLAN**  
**Barrier Removal Implementation**

No.	Type of Barrier	Unit Cost	Items	Total	Phase 1	Phase 2	Phase 3	Phase 4	Description of Correction
<b>Mt. Pleasant High School</b>									
1	Parking	\$3,649	9	\$32,841	\$32,841				Install new accessible parking space
3	Parking	\$10,942	1	\$10,942	\$10,942				Install accessible passenger loading zones
4	Parking	\$363	7	\$2,541	\$2,541				Install parking sign
5	Parking	\$2,191	1	\$2,191	\$2,191				Provide crosswalk at vehicular crossing way
7	Curb Cuts	\$3,793	1	\$3,793	\$3,793				Install new curb cut or curb ramp
9	Sidewalks	\$75	50	\$3,750	\$3,750				Install 48" wide sidewalk (per linear foot)
11	Sidewalks	\$294	1	\$294	\$294				Install directional sign
12	Ramps	\$22,610	4	\$90,440	\$30,147	\$30,147	\$30,147		Install new permanent ramp with required handrails
13	Ramps	\$9,483	3	\$28,449	\$14,225	\$14,225			Install new portable ramp with required handrails
16	Stairs	\$1,459	10	\$14,590	\$4,863	\$4,863	\$4,863		Install new required handrails for stairs
20	Doors	\$363	317	\$115,071	\$38,357	\$38,357	\$38,357		Install new hardware (handle, kickplate, etc.) per door
21	Doors	\$363	164	\$59,532	\$19,844	\$19,844	\$19,844		Install new or modify threshold
27	Assembly Rooms	\$1,095	12	\$13,140			\$13,140		Provide wheelchair seating space in assembly room
28	Assembly Rooms	\$8,025	2	\$16,050				\$16,050	Install assistive listening system with signage

**Patrick Sullivan Associates**  
**EAST SIDE UNION HIGH SCHOOL DISTRICT ADA TRANSITION PLAN**  
**Barrier Removal Implementation**

No.	Type of Barrier	Unit Cost	Items	Total	Phase 1	Phase 2	Phase 3	Phase 4	Description of Correction
29	Assembly Rooms	\$17,503	1	\$17,503			\$17,503		Install platform lift to provide stage access (0 to 5 feet)
32	Sanitary Facilities	\$35,000	2	\$70,000	\$35,000	\$35,000			Install accessible water closet, stall door, urinal, lavatory
33	Sanitary Facilities	\$5,800	6	\$34,800	\$11,600	\$11,600	\$11,600		Install/modify grab bars, insulation, accessories
36	Drinking Fountains	\$2,623	5	\$13,115	\$4,372	\$4,372	\$4,372		Install accessible drinking fountain (wing walls, rails, etc.)
38	Telephones	\$732	3	\$2,196	\$2,196				Re-position existing public telephone
40	Visual Alarms	\$1,020	197	\$200,940	\$66,980	\$66,980	\$66,980		Install visual alarm (per appliance)
41	Dining Facilities	\$8,025	3	\$24,075	\$12,038	\$12,038			Move counters, bollards, or other restrictions in aisles
44	Sinks	\$4,376	17	\$74,392	\$24,797	\$24,797	\$24,797		Provide accessible sink
47	Recreation	\$5,834	2	\$11,668				\$11,668	Install pool-entry device
51	Hazard Warnings	\$294	15	\$4,410	\$4,410				Add warning strips to stair treads (per 5 treads)
54	Signage	\$200	600	\$120,000	\$40,000	\$40,000	\$40,000		Provide or relocate tactile exit/identification signage
55	Signage	\$363	21	\$7,623	\$2,541	\$2,541	\$2,541		Provide or relocate tactile sanitary facility signage
57	Light Switches	\$1,000	250	\$250,000	\$83,333	\$83,333	\$83,333		Provide accessible light switches
	<b>Total</b>			<b>\$1,224,346</b>	<b>\$451,054</b>	<b>\$388,096</b>	<b>\$357,477</b>	<b>\$27,718</b>	

**Patrick Sullivan Associates**  
**EAST SIDE UNION HIGH SCHOOL DISTRICT ADA TRANSITION PLAN**  
**Barrier Removal Implementation**

No.	Type of Barrier	Unit Cost	Items	Total	Phase 1	Phase 2	Phase 3	Phase 4	Description of Correction
<b>Oak Grove High School</b>									
1	Parking	\$3,649	12	\$43,788	\$43,788				Install new accessible parking space
2	Parking	\$3,649	1	\$3,649	\$3,649				Relocate and/or restripe accessible parking spaces
4	Parking	\$363	5	\$1,815	\$1,815				Install parking sign
5	Parking	\$2,191	6	\$13,146	\$13,146				Provide crosswalk at vehicular crossing way
6	Parking	\$478	2	\$956	\$956				Provide "no parking" signs at loading zone
7	Curb Cuts	\$3,793	4	\$15,172	\$15,172				Install new curb cut or curb ramp
8	Curb Cuts	\$3,793	2	\$7,586	\$7,586				Modify existing curb cut
9	Sidewalks	\$75	200	\$15,000	\$15,000				Install 48" wide sidewalk (per linear foot)
10	Sidewalks	\$144	100	\$14,400	\$14,400				Replace existing sidewalk for path modification (per linear feet)
11	Sidewalks	\$294	10	\$2,940	\$1,470	\$1,470			Install directional sign
12	Ramps	\$22,610	10	\$226,100	\$75,367	\$75,367	\$75,367		Install new permanent ramp with required handrails
13	Ramps	\$9,483	10	\$94,830	\$31,610	\$31,610	\$31,610		Install new portable ramp with required handrails
14	Stairs	\$8,025	2	\$16,050	\$16,050				Install new permanent stairs with contrasting warning stripes
16	Stairs	\$1,459	23	\$33,557	\$11,186	\$11,186	\$11,186		Install new required handrails for stairs

**Patrick Sullivan Associates  
EAST SIDE UNION HIGH SCHOOL DISTRICT ADA TRANSITION PLAN  
Barrier Removal Implementation**

No.	Type of Barrier	Unit Cost	Items	Total	Phase 1	Phase 2	Phase 3	Phase 4	Description of Correction
17	Stairs	\$975	33	\$32,175	\$10,725	\$10,725	\$10,725		Install handrail extensions at stairs
19	Doors	\$6,272	4	\$25,088	\$12,544	\$12,544			Provide level floor and wall clearances on both sides of door
20	Doors	\$363	263	\$95,469	\$31,823	\$31,823	\$31,823		Install new hardware (handle, kickplate, etc.) per door
21	Doors	\$363	185	\$67,155	\$22,385	\$22,385	\$22,385		Install new or modify threshold
22	Elevators	\$123,976	1	\$123,976		\$123,976			Remodel elevator, 1-3 stops (enlarge shaft, hall call buttons)
26	Counters	\$2,191	32	\$70,112	\$23,371	\$23,371	\$23,371		Install new 36"-long section of accessible counter
27	Assembly Rooms	\$1,095	2	\$2,190			\$2,190		Provide wheelchair seating space in assembly room
28	Assembly Rooms	\$8,025	2	\$16,050				\$16,050	Install assistive listening system with signage
29	Assembly Rooms	\$17,503	2	\$35,006			\$35,006		Install platform lift to provide stage access (0 to 5 feet)
32	Sanitary Facilities	\$35,000	17	\$595,000	\$198,333	\$198,333	\$198,333		Install accessible water closet, stall door, urinal, lavatory
33	Sanitary Facilities	\$5,800	3	\$17,400	\$8,700	\$8,700			Install/modify grab bars, insulation, accessories
34	Sanitary Facilities	\$15,318	3	\$45,954			\$45,954		Install new accessible shower stall
35	Sanitary Facilities	\$3,649	3	\$10,947			\$10,947		Modify existing shower for access
36	Drinking Fountains	\$2,623	12	\$31,476	\$10,492	\$10,492	\$10,492		Install accessible drinking fountain (wing walls, rails, etc.)
40	Visual Alarms	\$1,020	63	\$64,260	\$21,420	\$21,420	\$21,420		Install visual alarm (per appliance)



**Patrick Sullivan Associates**  
**EAST SIDE UNION HIGH SCHOOL DISTRICT ADA TRANSITION PLAN**  
**Barrier Removal Implementation**

No.	Type of Barrier	Unit Cost	Items	Total	Phase 1	Phase 2	Phase 3	Phase 4	Description of Correction
44	Sinks	\$4,376	34	\$148,784	\$49,595	\$49,595	\$49,595		Provide accessible sink
46	Workstations	\$4,376	4	\$17,504	\$8,752	\$8,752			Install new or modify existing workstation
47	Recreation	\$5,834	2	\$11,668				\$11,668	Install pool-entry device
53	Hazard Warnings	\$513	3	\$1,539	\$1,539				Install wing walls, rails, or textured warning surface
54	Signage	\$200	520	\$104,000	\$34,667	\$34,667	\$34,667		Provide or relocate tactile exit/identification signage
57	Light Switches	\$1,000	50	\$50,000	\$16,667	\$16,667	\$16,667		Provide accessible light switches
	<b>Total</b>			<b>\$2,054,742</b>	<b>\$702,206</b>	<b>\$693,081</b>	<b>\$631,736</b>	<b>\$27,718</b>	

**Patrick Sullivan Associates  
EAST SIDE UNION HIGH SCHOOL DISTRICT ADA TRANSITION PLAN  
Barrier Removal Implementation**

No.	Type of Barrier	Unit Cost	Items	Total	Phase 1	Phase 2	Phase 3	Phase 4	Description of Correction
<b>Piedmont Hills High School</b>									
1	Parking	\$3,649	7	\$25,543	\$25,543				Install new accessible parking space
2	Parking	\$3,649	7	\$25,543	\$25,543				Relocate and/or restripe accessible parking spaces
3	Parking	\$10,942	1	\$10,942	\$10,942				Install accessible passenger loading zones
4	Parking	\$363	12	\$4,356	\$4,356				Install parking sign
5	Parking	\$2,191	2	\$4,382	\$4,382				Provide crosswalk at vehicular crossing way
6	Parking	\$478	1	\$478	\$478				Provide "no parking" signs at loading zone
7	Curb Cuts	\$3,793	4	\$15,172	\$15,172				Install new curb cut or curb ramp
8	Curb Cuts	\$3,793	1	\$3,793	\$3,793				Modify existing curb cut
9	Sidewalks	\$75	1,000	\$75,000	\$25,000	\$25,000	\$25,000		Install 48" wide sidewalk (per linear foot)
10	Sidewalks	\$144	1,500	\$216,000	\$72,000	\$72,000	\$72,000		Replace existing sidewalk for path modification (per linear feet)
11	Sidewalks	\$294	10	\$2,940	\$2,940				Install directional sign
12	Ramps	\$22,610	7	\$158,270	\$52,757	\$52,757	\$52,757		Install new permanent ramp with required handrails
13	Ramps	\$9,483	3	\$28,449	\$14,225	\$14,225			Install new portable ramp with required handrails
14	Stairs	\$8,025	3	\$24,075	\$8,025	\$8,025	\$8,025		Install new permanent stairs with contrasting warning stripes

**Patrick Sullivan Associates  
EAST SIDE UNION HIGH SCHOOL DISTRICT ADA TRANSITION PLAN  
Barrier Removal Implementation**

No.	Type of Barrier	Unit Cost	Items	Total	Phase 1	Phase 2	Phase 3	Phase 4	Description of Correction
16	Stairs	\$1,459	1	\$1,459	\$1,459				Install new required handrails for stairs
17	Stairs	\$975	2	\$1,950	\$1,950				Install handrail extensions at stairs
18	Doors	\$2,191	20	\$43,820	\$14,607	\$14,607	\$14,607		Install new door for required width
19	Doors	\$6,272	60	\$376,320	\$125,440	\$125,440	\$125,440		Provide level floor and wall clearances on both sides of door
20	Doors	\$363	300	\$108,900	\$36,300	\$36,300	\$36,300		Install new hardware (handle, kickplate, etc.) per door
25	Corridors	\$876	20	\$17,520	\$17,520				Remodel corridor to 44" minimum width (per linear foot)
26	Counters	\$2,191	4	\$8,764	\$4,382	\$4,382			Install new 36"-long section of accessible counter
28	Assembly Rooms	\$8,025	2	\$16,050				\$16,050	Install assistive listening system with signage
33	Sanitary Facilities	\$5,800	1	\$5,800	\$5,800				Install/modify grab bars, insulation, accessories
34	Sanitary Facilities	\$15,318	2	\$30,636			\$30,636		Install new accessible shower stall
36	Drinking Fountains	\$2,623	6	\$15,738	\$5,246	\$5,246	\$5,246		Install accessible drinking fountain (wing walls, rails, etc.)
38	Telephones	\$732	1	\$732	\$732				Re-position existing public telephone
40	Visual Alarms	\$1,020	191	\$194,820	\$64,940	\$64,940	\$64,940		Install visual alarm (per appliance)
42	Dining Facilities	\$8,025	2	\$16,050	\$16,050				Replace or modify serving counters
44	Sinks	\$4,376	3	\$13,128	\$13,128				Provide accessible sink

**Patrick Sullivan Associates**  
**EAST SIDE UNION HIGH SCHOOL DISTRICT ADA TRANSITION PLAN**  
**Barrier Removal Implementation**

No.	Type of Barrier	Unit Cost	Items	Total	Phase 1	Phase 2	Phase 3	Phase 4	Description of Correction
46	Workstations	\$4,376	3	\$13,128	\$13,128				Install new or modify existing workstation
50	Aisles	\$8,025	1	\$8,025		\$8,025			Relocate or replace existing shelving units in aisles
54	Signage	\$200	200	\$40,000	\$13,333	\$13,333	\$13,333		Provide or relocate tactile exit/identification signage
55	Signage	\$363	10	\$3,630	\$1,210	\$1,210	\$1,210		Provide or relocate tactile sanitary facility signage
56	Signage	\$363	1	\$363			\$363		Provide ALS-available signage at a ticket booth
57	Light Switches	\$1,000	93	\$93,000	\$31,000	\$31,000	\$31,000		Provide accessible light switches
	<b>Total</b>			<b>\$1,604,776</b>	<b>\$631,380</b>	<b>\$476,489</b>	<b>\$480,857</b>	<b>\$16,050</b>	

**Patrick Sullivan Associates**  
**EAST SIDE UNION HIGH SCHOOL DISTRICT ADA TRANSITION PLAN**  
**Barrier Removal Implementation**

No.	Type of Barrier	Unit Cost	Items	Total	Phase 1	Phase 2	Phase 3	Phase 4	Description of Correction
<b>Santa Teresa High School and Phoenix Alternative Education High School</b>									
1	Parking	\$3,649	2	\$7,298	\$7,298				Install new accessible parking space
2	Parking	\$3,649	17	\$62,033	\$62,033				Relocate and/or restripe accessible parking spaces
3	Parking	\$10,942	2	\$21,884	\$21,884				Install accessible passenger loading zones
4	Parking	\$363	4	\$1,452	\$1,452				Install parking sign
5	Parking	\$2,191	4	\$8,764	\$8,764				Provide crosswalk at vehicular crossing way
6	Parking	\$478	1	\$478	\$478				Provide "no parking" signs at loading zone
7	Curb Cuts	\$3,793	2	\$7,586	\$7,586				Install new curb cut or curb ramp
8	Curb Cuts	\$3,793	1	\$3,793	\$3,793				Modify existing curb cut
9	Sidewalks	\$75	400	\$30,000	\$30,000				Install 48" wide sidewalk (per linear foot)
10	Sidewalks	\$144	300	\$43,200	\$21,600	\$21,600			Replace existing sidewalk for path modification (per linear feet)
11	Sidewalks	\$294	4	\$1,176	\$1,176				Install directional sign
12	Ramps	\$22,610	12	\$271,320	\$90,440	\$90,440			Install new permanent ramp with required handrails
13	Ramps	\$9,483	21	\$199,143			\$199,143		Install new portable ramp with required handrails
14	Stairs	\$8,025	2	\$16,050	\$16,050				Install new permanent stairs with contrasting warning stripes

**Patrick Sullivan Associates  
EAST SIDE UNION HIGH SCHOOL DISTRICT ADA TRANSITION PLAN  
Barrier Removal Implementation**

No.	Type of Barrier	Unit Cost	Items	Total	Phase 1	Phase 2	Phase 3	Phase 4	Description of Correction
16	Stairs	\$1,459	16	\$23,344	\$7,781	\$7,781	\$7,781		Install new required handrails for stairs
17	Stairs	\$975	9	\$8,775	\$4,388	\$4,388			Install handrail extensions at stairs
18	Doors	\$2,191	7	\$15,337	\$5,112	\$5,112	\$5,112		Install new door for required width
19	Doors	\$6,272	94	\$589,568	\$196,523	\$196,523	\$196,523		Provide level floor and wall clearances on both sides of door
20	Doors	\$363	358	\$129,954	\$43,318	\$43,318	\$43,318		Install new hardware (handle, kickplate, etc.) per door
21	Doors	\$363	15	\$5,445	\$2,723	\$2,723			Install new or modify threshold
25	Corridors	\$876	20	\$17,520	\$8,760	\$8,760			Remodel corridor to 44" minimum width (per linear foot)
26	Counters	\$2,191	27	\$59,157	\$19,719	\$19,719	\$19,719		Install new 36"-long section of accessible counter
27	Assembly Rooms	\$1,095	2	\$2,190		\$2,190			Provide wheelchair seating space in assembly room
28	Assembly Rooms	\$8,025	1	\$8,025				\$8,025	Install assistive listening system with signage
29	Assembly Rooms	\$17,503	3	\$52,509			\$26,255	\$26,255	Install platform lift to provide stage access (0 to 5 feet)
31	Sanitary Facilities	\$21,878	4	\$87,512	\$29,171	\$29,171	\$29,171		Remodel toilet room for accessible path of travel
32	Sanitary Facilities	\$35,000	21	\$735,000	\$245,000	\$245,000	\$245,000		Install accessible water closet, stall door, urinal, lavatory
33	Sanitary Facilities	\$5,800	11	\$63,800	\$21,267	\$21,267	\$21,267		Install/modify grab bars, insulation, accessories
34	Sanitary Facilities	\$15,318	4	\$61,272			\$61,272		Install new accessible shower stall

**Patrick Sullivan Associates**  
**EAST SIDE UNION HIGH SCHOOL DISTRICT ADA TRANSITION PLAN**  
**Barrier Removal Implementation**

No.	Type of Barrier	Unit Cost	Items	Total	Phase 1	Phase 2	Phase 3	Phase 4	Description of Correction
35	Sanitary Facilities	\$3,649	2	\$7,298			\$7,298		Modify existing shower for access
36	Drinking Fountains	\$2,623	9	\$23,607	\$7,869	\$7,869	\$7,869		Install accessible drinking fountain (wing walls, rails, etc.)
40	Visual Alarms	\$1,020	104	\$106,080	\$35,360	\$35,360	\$35,360		Install visual alarm (per appliance)
44	Sinks	\$4,376	17	\$74,392	\$24,797	\$24,797	\$24,797		Provide accessible sink
46	Workstations	\$4,376	2	\$8,752	\$8,752				Install new or modify existing workstation
47	Recreation	\$5,834	2	\$11,668				\$11,668	Install pool-entry device
48	Recreation	\$15,318	1	\$15,318				\$15,318	Install accessible playground/athletic equipment
49	Recreation	\$12	200	\$2,400		\$2,400			Resurface playground/athletic area (per square foot)
50	Aisles	\$8,025	2	\$16,050	\$16,050				Relocate or replace existing shelving units in aisles
52	Hazard Warnings	\$35	40	\$1,400	\$1,400				Install guard curb or wheel stop (per linear feet)
53	Hazard Warnings	\$513	14	\$7,182	\$3,591	\$3,591			Install wing walls, rails, or textured warning surface
54	Signage	\$200	400	\$80,000	\$26,667	\$26,667	\$26,667		Provide or relocate tactile exit/identification signage
55	Signage	\$363	6	\$2,178	\$1,089	\$1,089			Provide or relocate tactile sanitary facility signage
57	Light Switches	\$1,000	400	\$400,000	\$133,333	\$133,333	\$133,333		Provide accessible light switches
	<b>Total</b>			<b>\$3,289,910</b>	<b>\$1,099,173</b>	<b>\$949,147</b>	<b>\$981,182</b>	<b>\$260,409</b>	

**Patrick Sullivan Associates  
EAST SIDE UNION HIGH SCHOOL DISTRICT ADA TRANSITION PLAN  
Barrier Removal Implementation**

No.	Type of Barrier	Unit Cost	Items	Total	Phase 1	Phase 2	Phase 3	Phase 4	Description of Correction
<b>Silver Creek High School</b>									
2	Parking	\$3,649	14	\$51,086	\$51,086				Relocate and/or restripe accessible parking spaces
3	Parking	\$10,942	1	\$10,942	\$10,942				Install accessible passenger loading zones
4	Parking	\$363	4	\$1,452	\$1,452				Install parking sign
5	Parking	\$2,191	5	\$10,955	\$10,955				Provide crosswalk at vehicular crossing way
7	Curb Cuts	\$3,793	2	\$7,586	\$7,586				Install new curb cut or curb ramp
8	Curb Cuts	\$3,793	1	\$3,793	\$3,793				Modify existing curb cut
9	Sidewalks	\$75	500	\$37,500	\$12,500	\$12,500	\$12,500		Install 48" wide sidewalk (per linear foot)
10	Sidewalks	\$144	100	\$14,400	\$7,200	\$7,200			Replace existing sidewalk for path modification (per linear feet)
11	Sidewalks	\$294	10	\$2,940	\$2,940				Install directional sign
12	Ramps	\$22,610	25	\$565,250	\$188,417	\$188,417	\$188,417		Install new permanent ramp with required handrails
13	Ramps	\$9,483	12	\$113,796				\$113,796	Install new portable ramp with required handrails
14	Stairs	\$8,025	20	\$160,500	\$53,500	\$53,500	\$53,500		Install new permanent stairs with contrasting warning stripes
16	Stairs	\$1,459	3	\$4,377	\$2,189	\$2,189			Install new required handrails for stairs
17	Stairs	\$975	1	\$975	\$975				Install handrail extensions at stairs



**Patrick Sullivan Associates**  
**EAST SIDE UNION HIGH SCHOOL DISTRICT ADA TRANSITION PLAN**  
**Barrier Removal Implementation**

No.	Type of Barrier	Unit Cost	Items	Total	Phase 1	Phase 2	Phase 3	Phase 4	Description of Correction
18	Doors	\$2,191	3	\$6,573	\$6,573				Install new door for required width
19	Doors	\$6,272	25	\$156,800	\$52,267	\$52,267	\$52,267		Provide level floor and wall clearances on both sides of door
20	Doors	\$363	267	\$96,921	\$32,307	\$32,307	\$32,307		Install new hardware (handle, kickplate, etc.) per door
21	Doors	\$363	61	\$22,143	\$7,381	\$7,381	\$7,381		Install new or modify threshold
26	Counters	\$2,191	26	\$56,966	\$18,989	\$18,989	\$18,989		Install new 36"-long section of accessible counter
27	Assembly Rooms	\$1,095	4	\$4,380		\$4,380			Provide wheelchair seating space in assembly room
28	Assembly Rooms	\$8,025	1	\$8,025			\$8,025		Install assistive listening system with signage
29	Assembly Rooms	\$17,503	1	\$17,503			\$17,503		Install platform lift to provide stage access (0 to 5 feet)
32	Sanitary Facilities	\$35,000	13	\$455,000	\$151,667	\$151,667	\$151,667		Install accessible water closet, stall door, urinal, lavatory
33	Sanitary Facilities	\$5,800	2	\$11,600	\$5,800	\$5,800			Install/modify grab bars, insulation, accessories
34	Sanitary Facilities	\$15,318	4	\$61,272			\$61,272		Install new accessible shower stall
36	Drinking Fountains	\$2,623	6	\$15,738	\$5,246	\$5,246	\$5,246		Install accessible drinking fountain (wing walls, rails, etc.)
37	Drinking Fountains	\$548	1	\$548	\$548				Install accessible drinking fountain/hardware
40	Visual Alarms	\$1,020	26	\$26,520	\$8,840	\$8,840	\$8,840		Install visual alarm (per appliance)
42	Dining Facilities	\$8,025	2	\$16,050	\$16,050				Replace or modify serving counters

**Patrick Sullivan Associates**  
**EAST SIDE UNION HIGH SCHOOL DISTRICT ADA TRANSITION PLAN**  
**Barrier Removal Implementation**

No.	Type of Barrier	Unit Cost	Items	Total	Phase 1	Phase 2	Phase 3	Phase 4	Description of Correction
44	Sinks	\$4,376	13	\$56,888	\$18,963	\$18,963	\$18,963		Provide accessible sink
46	Workstations	\$4,376	3	\$13,128	\$6,564	\$6,564			Install new or modify existing workstation
47	Recreation	\$5,834	2	\$11,668				\$11,668	Install pool-entry device
50	Aisles	\$8,025	3	\$24,075	\$12,038	\$12,038			Relocate or replace existing shelving units in aisles
53	Hazard Warnings	\$513	3	\$1,539	\$1,539				Install wing walls, rails, or textured warning surface
54	Signage	\$200	330	\$66,000	\$22,000	\$22,000	\$22,000		Provide or relocate tactile exit/identification signage
55	Signage	\$363	10	\$3,630	\$1,210	\$1,210	\$1,210		Provide or relocate tactile sanitary facility signage
	<b>Total</b>			<b>\$2,118,519</b>	<b>\$721,514</b>	<b>\$611,455</b>	<b>\$660,085</b>	<b>\$125,464</b>	

**Patrick Sullivan Associates  
EAST SIDE UNION HIGH SCHOOL DISTRICT ADA TRANSITION PLAN  
Barrier Removal Implementation**

No.	Type of Barrier	Unit Cost	Items	Total	Phase 1	Phase 2	Phase 3	Phase 4	Description of Correction
<b>W.C. Overfelt High School and Apollo Alternative Education High School</b>									
1	Parking	\$3,649	15	\$54,735	\$54,735				Install new accessible parking space
2	Parking	\$3,649	3	\$10,947	\$10,947				Relocate and/or restripe accessible parking spaces
3	Parking	\$10,942	1	\$10,942	\$10,942				Install accessible passenger loading zones
4	Parking	\$363	10	\$3,630	\$3,630				Install parking sign
5	Parking	\$2,191	2	\$4,382	\$4,382				Provide crosswalk at vehicular crossing way
6	Parking	\$478	1	\$478	\$478				Provide "no parking" signs at loading zone
7	Curb Cuts	\$3,793	2	\$7,586	\$7,586				Install new curb cut or curb ramp
9	Sidewalks	\$75	100	\$7,500	\$7,500				Install 48" wide sidewalk (per linear foot)
11	Sidewalks	\$294	15	\$4,410	\$1,470	\$1,470	\$1,470		Install directional sign
12	Ramps	\$22,610	1	\$22,610		\$11,305	\$11,305		Install new permanent ramp with required handrails
13	Ramps	\$9,483	5	\$47,415			\$23,708	\$23,708	Install new portable ramp with required handrails
16	Stairs	\$1,459	4	\$5,836	\$5,836				Install new required handrails for stairs
17	Stairs	\$975	1	\$975	\$975				Install handrail extensions at stairs
19	Doors	\$6,272	5	\$31,360	\$10,453	\$10,453	\$10,453		Provide level floor and wall clearances on both sides of door

**Patrick Sullivan Associates**  
**EAST SIDE UNION HIGH SCHOOL DISTRICT ADA TRANSITION PLAN**  
**Barrier Removal Implementation**

No.	Type of Barrier	Unit Cost	Items	Total	Phase 1	Phase 2	Phase 3	Phase 4	Description of Correction
20	Doors	\$363	368	\$133,584	\$44,528	\$44,528	\$44,528		Install new hardware (handle, kickplate, etc.) per door
21	Doors	\$363	125	\$45,375	\$15,125	\$15,125	\$15,125		Install new or modify threshold
24	Elevators	\$182,318	1	\$182,318		\$182,318			Install new elevator, cab and shaft (1 to 3 stops)
26	Counters	\$2,191	3	\$6,573	\$3,287	\$3,287			Install new 36"-long section of accessible counter
28	Assembly Rooms	\$8,025	3	\$24,075			\$12,038	\$12,038	Install assistive listening system with signage
29	Assembly Rooms	\$17,503	1	\$17,503			\$8,752	\$8,752	Install platform lift to provide stage access (0 to 5 feet)
32	Sanitary Facilities	\$35,000	6	\$210,000	\$210,000				Install accessible water closet, stall door, urinal, lavatory
35	Sanitary Facilities	\$3,649	2	\$7,298	\$7,298				Modify existing shower for access
36	Drinking Fountains	\$2,623	6	\$15,738	\$5,246	\$5,246	\$5,246		Install accessible drinking fountain (wing walls, rails, etc.)
38	Telephones	\$732	2	\$1,464	\$1,464				Re-position existing public telephone
40	Visual Alarms	\$1,020	260	\$265,200	\$88,400	\$88,400	\$88,400		Install visual alarm (per appliance)
41	Dining Facilities	\$8,025	1	\$8,025	\$8,025				Move counters, bollards, or other restrictions in aisles
42	Dining Facilities	\$8,025	2	\$16,050	\$8,025	\$8,025			Replace or modify serving counters
43	Dining Facilities	\$1,897	1	\$1,897	\$1,897				Provide accessible table seating (per space)
44	Sinks	\$4,376	10	\$43,760	\$21,880	\$21,880			Provide accessible sink

**Patrick Sullivan Associates  
EAST SIDE UNION HIGH SCHOOL DISTRICT ADA TRANSITION PLAN  
Barrier Removal Implementation**

No.	Type of Barrier	Unit Cost	Items	Total	Phase 1	Phase 2	Phase 3	Phase 4	Description of Correction
46	Workstations	\$4,376	10	\$43,760	\$21,880	\$21,880			Install new or modify existing workstation
47	Recreation	\$5,834	2	\$11,668				\$11,668	Install pool-entry device
51	Hazard Warnings	\$294	4	\$1,176	\$1,176				Add warning strips to stair treads (per 5 treads)
52	Hazard Warnings	\$35	50	\$1,750	\$1,750				Install guard curb or wheel stop (per linear feet)
53	Hazard Warnings	\$513	3	\$1,539	\$1,539				Install wing walls, rails, or textured warning surface
54	Signage	\$200	250	\$50,000	\$16,667	\$16,667	\$16,667		Provide or relocate tactile exit/identification signage
55	Signage	\$363	10	\$3,630	\$3,630				Provide or relocate tactile sanitary facility signage
56	Signage	\$363	2	\$726	\$726				Provide ALS-available signage at a ticket booth
57	Light Switches	\$1,000	168	\$168,000	\$168,000				Provide accessible light switches
	<b>Total</b>			<b>\$1,473,915</b>	<b>\$749,477</b>	<b>\$430,584</b>	<b>\$237,691</b>	<b>\$56,165</b>	

**Patrick Sullivan Associates**  
**EAST SIDE UNION HIGH SCHOOL DISTRICT ADA TRANSITION PLAN**  
**Barrier Removal Implementation**

No.	Type of Barrier	Unit Cost	Items	Total	Phase 1	Phase 2	Phase 3	Phase 4	Description of Correction
<b>Yerba Buena High School</b>									
2	Parking	\$3,649	10	\$36,490	\$36,490				Relocate and/or restripe accessible parking spaces
4	Parking	\$363	14	\$5,082	\$5,082				Install parking sign
5	Parking	\$2,191	3	\$6,573	\$6,573				Provide crosswalk at vehicular crossing way
7	Curb Cuts	\$3,793	4	\$15,172	\$15,172				Install new curb cut or curb ramp
8	Curb Cuts	\$3,793	2	\$7,586	\$7,586				Modify existing curb cut
9	Sidewalks	\$75	300	\$22,500	\$22,500				Install 48" wide sidewalk (per linear foot)
10	Sidewalks	\$144	100	\$14,400	\$14,400				Replace existing sidewalk for path modification (per linear feet)
11	Sidewalks	\$294	15	\$4,410	\$4,410				Install directional sign
12	Ramps	\$22,610	5	\$113,050	\$56,525	\$56,525			Install new permanent ramp with required handrails
13	Ramps	\$9,483	17	\$161,211	\$53,737	\$53,737	\$53,737		Install new portable ramp with required handrails
14	Stairs	\$8,025	2	\$16,050	\$8,025	\$8,025			Install new permanent stairs with contrasting warning stripes
15	Stairs	\$2,917	2	\$5,834				\$5,834	Install new portable stairs
16	Stairs	\$1,459	2	\$2,918	\$2,918				Install new required handrails for stairs
17	Stairs	\$975	2	\$1,950	\$1,950				Install handrail extensions at stairs

**Patrick Sullivan Associates  
EAST SIDE UNION HIGH SCHOOL DISTRICT ADA TRANSITION PLAN  
Barrier Removal Implementation**

No.	Type of Barrier	Unit Cost	Items	Total	Phase 1	Phase 2	Phase 3	Phase 4	Description of Correction
18	Doors	\$2,191	1	\$2,191	\$2,191				Install new door for required width
19	Doors	\$6,272	71	\$445,312	\$148,437	\$148,437	\$148,437		Provide level floor and wall clearances on both sides of door
20	Doors	\$363	335	\$121,605	\$40,535	\$40,535	\$40,535		Install new hardware (handle, kickplate, etc.) per door
21	Doors	\$363	83	\$30,129	\$10,043	\$10,043	\$10,043		Install new or modify threshold
26	Counters	\$2,191	27	\$59,157	\$19,719	\$19,719	\$19,719		Install new 36"-long section of accessible counter
28	Assembly Rooms	\$8,025	1	\$8,025			\$8,025		Install assistive listening system with signage
29	Assembly Rooms	\$17,503	2	\$35,006			\$35,006		Install platform lift to provide stage access (0 to 5 feet)
32	Sanitary Facilities	\$35,000	14	\$490,000	\$163,333	\$163,333	\$163,333		Install accessible water closet, stall door, urinal, lavatory
33	Sanitary Facilities	\$5,800	2	\$11,600	\$5,800	\$5,800			Install/modify grab bars, insulation, accessories
34	Sanitary Facilities	\$15,318	2	\$30,636			\$30,636		Install new accessible shower stall
36	Drinking Fountains	\$2,623	13	\$34,099	\$11,366	\$11,366	\$11,366		Install accessible drinking fountain (wing walls, rails, etc.)
40	Visual Alarms	\$1,020	74	\$75,480	\$25,160	\$25,160	\$25,160		Install visual alarm (per appliance)
44	Sinks	\$4,376	12	\$52,512	\$17,504	\$17,504	\$17,504		Provide accessible sink
46	Workstations	\$4,376	1	\$4,376		\$4,376			Install new or modify existing workstation
47	Recreation	\$5,834	4	\$23,336				\$23,336	Install pool-entry device

**Patrick Sullivan Associates  
EAST SIDE UNION HIGH SCHOOL DISTRICT ADA TRANSITION PLAN  
Barrier Removal Implementation**

No.	Type of Barrier	Unit Cost	Items	Total	Phase 1	Phase 2	Phase 3	Phase 4	Description of Correction
50	Aisles	\$8,025	1	\$8,025		\$8,025			Relocate or replace existing shelving units in aisles
53	Hazard Warnings	\$513	4	\$2,052	\$2,052				Install wing walls, rails, or textured warning surface
54	Signage	\$200	350	\$70,000	\$23,333	\$23,333	\$23,333		Provide or relocate tactile exit/identification signage
55	Signage	\$363	15	\$5,445	\$1,815	\$1,815	\$1,815		Provide or relocate tactile sanitary facility signage
	<b>Total</b>			<b>\$1,922,212</b>	<b>\$706,657</b>	<b>\$597,734</b>	<b>\$588,650</b>	<b>\$29,170</b>	



**Patrick Sullivan Associates  
EAST SIDE UNION HIGH SCHOOL DISTRICT ADA TRANSITION PLAN  
Barrier Removal Implementation**

No.	Type of Barrier	Unit Cost	Items	Total	Phase 1	Phase 2	Phase 3	Phase 4	Description of Correction
<b>Educational Center</b>									
1	Parking	\$3,649	4	\$14,596	\$14,596				Install new accessible parking space
2	Parking	\$3,649	4	\$14,596	\$14,596				Relocate and/or restripe accessible parking spaces
4	Parking	\$363	4	\$1,452	\$1,452				Install parking sign
7	Curb Cuts	\$3,793	2	\$7,586	\$7,586				Install new curb cut or curb ramp
9	Sidewalks	\$75	200	\$15,000	\$15,000				Install 48" wide sidewalk (per linear foot)
12	Ramps	\$22,610	2	\$45,220		\$22,610	\$22,610		Install new permanent ramp with required handrails
13	Ramps	\$9,483	1	\$9,483			\$4,742	\$4,742	Install new portable ramp with required handrails
15	Stairs	\$2,917	1	\$2,917			\$2,917		Install new portable stairs
20	Doors	\$363	250	\$90,750	\$30,250	\$30,250	\$30,250		Install new hardware (handle, kickplate, etc.) per door
21	Doors	\$363	5	\$1,815	\$605	\$605	\$605		Install new or modify threshold
26	Counters	\$2,191	4	\$8,764	\$4,382	\$4,382			Install new 36"-long section of accessible counter
32	Sanitary Facilities	\$35,000	3	\$105,000	\$105,000				Install accessible water closet, stall door, urinal, lavatory
33	Sanitary Facilities	\$5,800	2	\$11,600	\$11,600				Install/modify grab bars, insulation, accessories
34	Sanitary Facilities	\$15,318	1	\$15,318		\$15,318			Install new accessible shower stall

**Patrick Sullivan Associates  
EAST SIDE UNION HIGH SCHOOL DISTRICT ADA TRANSITION PLAN  
Barrier Removal Implementation**

No.	Type of Barrier	Unit Cost	Items	Total	Phase 1	Phase 2	Phase 3	Phase 4	Description of Correction
36	Drinking Fountains	\$2,623	4	\$10,492	\$3,497	\$3,497	\$3,497		Install accessible drinking fountain (wing walls, rails, etc.)
40	Visual Alarms	\$1,020	50	\$51,000	\$17,000	\$17,000	\$17,000		Install visual alarm (per appliance)
44	Sinks	\$4,376	4	\$17,504	\$8,752	\$8,752			Provide accessible sink
45	Sinks	\$490	2	\$980		\$980			Install accessible sink faucet/hardware
54	Signage	\$200	200	\$40,000	\$13,333	\$13,333	\$13,333		Provide or relocate tactile exit/identification signage
57	Light Switches	\$1,000	45	\$45,000	\$15,000	\$15,000	\$15,000		Provide accessible light switches
	<b>Total</b>			<b>\$509,073</b>	<b>\$262,650</b>	<b>\$131,728</b>	<b>\$109,954</b>	<b>\$4,742</b>	

---

**Maintenance**

---

**MAINTENANCE**

Title II of the ADA (35.133) requires that accessible portions of a facility be maintained in order to provide continued accessibility once physical barriers are initially removed. The following checklist of items that can be performed by a facility's own maintenance staff is provided to assist in complying with this portion of the ADA. It is recommended that all items on this list be reviewed at least once between the time of the survey and the date for final implementation of barrier removal, and thereafter at regular intervals.

Item	Problem	Solution	Number of Occurrences	Action Taken (Date)	Corrections Completed (Date)
Parking	Surface of accessible parking stall(s) is not marked with a 36" x 36" International Symbol of Accessibility (white and blue) on the parking surface near the foot of each space.	Paint a 36" x 36" symbol of accessibility (white on blue) on the parking surface near the foot of each space.			
	Surface of aisle next to accessible parking stall is not marked with blue diagonal striping.	Paint blue diagonal striping spaced 36 inches apart on aisle surface.			
	No bumper or curb is provided at the head of accessible parking stall(s).	Provide a wheel bumper (painted blue) at the head of each accessible parking stall.			
	Bumper or curb for accessible parking stall is not blue.	Paint bumper or curb blue.			
	Sign at head of parking stall is not visible when a car is parked in the stall.	Remount sign 80 inches above the parking surface at the head of the space or, if there is a wall at the head of the space, 36 inches high on the wall.			

Item	Problem	Solution	Number of Occurrences	Action Taken (Date)	Corrections Completed (Date)
Parking (continued)	Towed-vehicle warning sign for violation of disability parking stall use is not readily visible.	Remount sign so it is conspicuous; recommended locations are at or near each lot entrance or such that the sign can be seen easily from each accessible stall.			
Curb Cuts	Surface of curb cut has become broken or moved out of level by tree roots, etc.	Shave down irregularities or resurface ramp.			
Sidewalks	Surface has become broken or moved out of level by tree roots, etc.	Replace section of sidewalk so it is smooth and level.			
	Open gratings occur in the path of travel.	Replace existing grate with one in which min. opening dimension is no more than 1/2 inch and is oriented parallel to the path of travel.			
Ramps	Concrete or asphalt or similar surface has become broken or moved out of alignment.	Shave down irregularities or replace surface.			
	Water collects on ramp or landing surface.	Protect from water with drain, damming, or cover.			
	Handrail surface is rough or splintery.	Refinish handrail.			
	Handrail is loose.	Tighten fittings.			

Item	Problem	Solution	Number of Occurrences	Action Taken (Date)	Corrections Completed (Date)
Stairs	Treads are worn, loose, or otherwise damaged, or have abrupt nosings.	Refinish or replace treads so that the underside of the nosing is angled, nosing projects no more than 1-1/2 inches, and the leading edge has a radius no more than 1/2 inch.			
	Handrail surface is rough or splintery.	Refinish handrail.			
	Handrail is loose.	Tighten fittings.			
	No warning strips are provided at top and bottom of stairs.	Provide 2-inch-wide, contrasting-color, raised strip the full width of the stair 1 inch from the nosing of the top landing, the bottom tread of each flight of interior stairs, and all treads of exterior stairs. At the top of each run, add parallel strips so that the warning area is 36 inches deep.			
Entrances and Exits	An entrance is closed for repairs.	The temporary entrance provided during closure of a normal entrance must also be accessible.			
	An accessible entrance is not identified as accessible.	Mount a sign with the International Symbol of Accessibility (white on blue) next to the latch edge of the door 60 inches high.			
	An emergency exit is not accessible, so an area of rescue assistance has been provided.	Make sure signage that directs users to the area of rescue assistance is readily visible along related paths of travel.			

Item	Problem	Solution	Number of Occurrences	Action Taken (Date)	Corrections Completed (Date)
Doors	Concrete or asphalt or similar surface of the approach space at a door has become broken or moved out of level.	Shave down irregularities or resurface.			
	Movable furnishings or other objects limit maneuvering space around doors.	Rearrange furniture, etc., so that there is a 60" x 60" floor space in front of the door on the pull side and a 48" x 48" floor space on the push side.			
	Edges of doormat are loose or curl up.	Replace or fasten down doormat so that the edge is no more than 1/4 inch vertical.			
	Door threshold is more than 1/2 inch high.	Replace threshold strip (1) with a strip that is vertical no more than 1/4 inch and beveled 45 degrees for remainder of height to 1/2 inch or (2) with a ramp that slopes on both sides of the doorway no more than 1:12 (8/3%) if a threshold greater than 1/2 inch is required.			
	Door requires too much force to open (push or pull).	Adjust force to 5 lbs. for interior doors (including toilet stalls and storage), 5 lbs. for exterior doors, and 5 lbs. for fire doors (new requirement).			

Item	Problem	Solution	Number of Occurrences	Action Taken (Date)	Corrections Completed (Date)
Doors (continued)	Door opening hardware is difficult to operate.	Adjust or repair door hardware. (This assumes that the proper type of hardware is already installed, and includes toilet stalls and storage.)			
	Door closes too quickly.	Adjust closer so that door requires at least 3 seconds to backcheck. (Includes accessible toilet stalls.)			
Sanitary Facilities	Accessories (dispensers, waste receptacle openings, mirrors, etc.) are too high.	Remount one of each so that its operating parts (and the bottom reflecting edge of the mirror) are no more than 40 inches high.			
	Wall-hung accessories protrude into circulation space more than 4 inches.	Remount accessories so that they protrude less than 4 inches or so that their leading (usually bottom) edge is lower than 27 inches above the floor.			
	Controls for flush, lavatory, or accessories are difficult to operate.	Adjust or replace operating mechanism so that no more than 5 lb. force is required to use; level-type, button, or automatic controls are required so that the operation can be easily performed with one hand without grasping or twisting.			
	Door on accessible toilet stall does not close automatically.	Repair, replace, or provide automatic closer.			



Item	Problem	Solution	Number of Occurrences	Action Taken (Date)	Corrections Completed (Date)
Sanitary Facilities (continued)	Toilet seat in accessible stall is too low.	Install new seat or seat adapter to raise top rim to 17 to 19 inches above floor.			
	Grab bars in accessible toilet stall are rough or sharp.	Refinish or replace grab bars.			
	Grab bars are loose.	Tighten fittings.			
	Toilet paper dispenser in accessible stall is difficult to reach or operate.	Replace or remount dispenser to provide continuous paper flow and so that dispenser is within 36 inches of the back wall and centered 19 inches above the floor.			
	Plumbing under accessible lavatory is exposed.	Wrap plumbing with insulation to prevent exposure to hot pipes.			
	Floor-standing objects interfere with access to fixtures and/or accessories.	Rearrange movable objects to provide clear access to fixtures and accessories and to maintain a 44-inch-wide path of travel throughout, as well as a 60-inch turning circle within the room.			
	A bench interferes with access to lockers by reducing aisle width to less than 36 inches.	Remove bench in front of one bank of lockers.			
	Built-in locks on lockers require grasping or twisting of the wrist.	Replace locks on 1% of lockers (and at least one) with a mechanism that can be easily operated with one hand.			

Item	Problem	Solution	Number of Occurrences	Action Taken (Date)	Corrections Completed (Date)
Sanitary Facilities (continued)	Special door signs have not been provided.	Mount the following signs centered on the door 60 inches high. Men's room: 1/4-inch-thick equilateral triangle 12 inches on a side and point up. Women's room: 1/4-inch-thick circle 12 inches in diameter. Unisex room: 1/4-inch-thick circle 12 inches in diameter with 1/4-inch-thick equilateral triangle superimposed point up on the circle.			
Drinking Fountains	Flow of water from spout is low.	Clean spout or adjust water pressure so that the flow is at least 4 inches high.			
	Controls are difficult to operate.	Adjust or replace operating mechanism so that no more than 5 lb. forces is required to use; level-type, button, or automatic controls are required so that the operation can be easily performed with one hand without grasping or twisting.			
	A wheelchair-accessible fountain (i.e., with 27-inch-high knee space) is not protected by alcove or wing walls.	Texture the adjacent walking surface for 12 inches around the fountain with rubber strips (1/8 inch thick, 3/4 to 2 inches wide, and spaced 1/4 to 3/4 inches apart), grooves, or other cane-detectable finish.			

Item	Problem	Solution	Number of Occurrences	Action Taken (Date)	Corrections Completed (Date)
Closets, Shelves, and Other Storage	Clothes rods are difficult to reach.	Adjust clothes rods so that a portion is no more than 48 inches high.			
	Shelves are difficult to reach.	Adjust shelving to locate most commonly used shelves no more than 48 inches high.			
	Handle are difficult to operate with one hand.	Replace door and drawer handles with lever-type, U-shaped, or touch-latch hardware.			
	Movable furniture or other objects make storage difficult to reach.	Rearrange so that nothing deeper than 20 no higher than 34 inches is in front of accessible controls, accessories, storage, etc., and nothing interferes with accessible paths of travel, including doorways, aisles, and corridors.			
Elevators and Platform Lifts	Routine maintenance is required.	Specify to elevator company that compliance with ADAAG standards should be met. (Assumes that basic ADAAG requirements for configuration of elevators have been met.)			
Areas of Rescue Assistance	Period maintenance check. (Includes signage at and directing users to these areas.)	Contact local fire dept. for determination of compliance.			

Item	Problem	Solution	Number of Occurrences	Action Taken (Date)	Corrections Completed (Date)
Alarms	Period maintenance check.	Contact local fire dept. for determination of compliance.			
Recreation Facilities	An otherwise accessible dressing room (36" wide x 48" deep) lacks enough space to close the door when the room is occupied.	Replace the door with a curtain (assuming doorway is already at least 32 inches wide).			
Meeting Rooms and Auditoriums	If an assistive listening system is provided, potential users need to know that it is available.	Post a sign in a prominent place that displays the international symbol of deafness and states "Assistive Listening System Available."			
Cafeterias	If the cafeteria seating is on more than one level, at least 5% of total seating must still be accessible.	Locate comparable services and wheelchair seating spaces (each 30" x 48" with 27-inch-high knee space at least 19 inches deep) on accessible level(s) along with 3/4 of the seating open to the general public.			
Land-scaping	Benches, tables, etc. that are fixed in place or too heavy to be easily moved are located along walkways or in plazas.	Arrange outdoor furniture so that 5% has adjacent space for a wheelchair.			
	Planters, waste receptacles, bollards, benches, tables, etc. are fixed in place or too heavy to be easily moved.	Arrange objects so they do not limit access to landscaped areas having paved or otherwise-accessible walkways.			

Item	Problem	Solution	Number of Occurrences	Action Taken (Date)	Corrections Completed (Date)
Misc. Items in Rooms and Spaces	Light switches, controls for air conditioning and heating, etc. are too high.	Remount controls so they are no higher than 40 inches.			
	Office furniture prevents access through room(s).	Rearrange office furniture to provide a 36-inch-wide path of travel to all areas.			
	Employee lunchroom.	Locate amenities (e.g., coffeemakers, microwaves) so that usable parts are no higher than 40 inches.			
	Carpeting (including ramps, stairs, and elevator cabs) has exposed edges or is frayed.	Cover edges with beveled trim. Replace or patch frayed portions of carpet.			
	Wall-hung accessories protrude into circulation space more than 4 inches.	Remount accessories to protrude less than 4 inches or so their leading edge is less than 27 inches above the floor.			

---

## **Appendix**

---



