

ELECTRICAL SYMBOLS

	POLE MOUNTED LIGHT FIXTURE
	FIXTURE IDENTIFICATION TAG - SEE SCHEDULE
	LED DIMMING SWITCH MOUNTED +44" U.O.N.
	JUNCTION BOX WITH COVER
	SPECIAL RECEPTACLE OUTLET, AMPERE, VOLTAGE, PHASE AND NEMA RATING AS NOTED ON THE DRAWINGS
	20A-120V DUPLEX RECEPTACLE OUTLET, NEMA 520R SPECIFICATION GRADE, WALL MOUNTED +18" U.O.N.
	FLUSH MOUNTED PANELBOARD - SEE SCHEDULES
	SURFACE MOUNTED PANELBOARD - SEE SCHEDULES
	SWITCHBOARD, DISTRIBUTION PANEL, MCC - SEE SINGLE LINE DIAGRAM
	RECESS MOUNTED TERMINAL CABINET/CONTROL PANEL
	SURFACE MOUNTED TERMINAL CABINET/CONTROL PANEL
	CONDUIT AND CONDUCTORS INSTALLED UNDERGROUND OR BELOW SLAB
	CONDUIT AND CONDUCTORS CONCEALED IN WALL OR CEILING
	CONDUIT AND CONDUCTORS INSTALLED EXPOSED
	HOMERUN TO SWITCHBOARD, PANELBOARD, TERMINAL CABINET, ETC.
	WIRING TURNED UP
	WIRING TURNED DOWN
	CONDUIT OR DUCT STUB AND CAP
	POWER PULL BOX
	SIGNAL PULL BOX
	SHEET NOTE IDENTIFICATION TAG, SEE RESPECTIVE "SHEET NOTES"

• DENOTES GROUND WIRE
 CROSS LINES DENOTES QUANTITY OF #12 CONDUCTORS U.O.N.
 NO CROSS LINES DENOTES 2#12 & 1#12 G. MINIMUM.

ABBREVIATIONS

A, AMPS	AMPERES
AC	ALTERNATE CURRENT
AF	AMPERE FRAME
AFG	ABOVE FINISHED FLOOR
AFG	ABOVE FINISHED GRADE
AIC	AMPERE INTERRUPTION CURRENT APPROXIMATE
ARCH	ARCHITECT/ARCHITECTURAL
AWG	AMERICAN WIRE GAUGE
BKBD	BACKBOARD
BKR	BREAKER
C	CONDUIT
CO	CONDUIT ONLY
CU	COPPER
DET.	DETAIL
DIA	DIAMETER
DISC	DISCONNECT (SWITCH)
DWG	DRAWING
<E>	EXISTING
FA	FIRE ALARM
FACP	FIRE ALARM CONTROL PANEL
G	GROUND
GFI	GROUND FAULT INTERRUPTER
KCMIL	KILO CIRCULAR MILLS
KVA	KILOVOLT-AMPERES
KW	KILOWATTS
MAX	MAXIMUM
MIN	MINIMUM
MLO	MAIN LUGS ONLY
MTD	MOUNTED
MTG. HT.	MOUNTING HEIGHT
MSB	MAIN SWITCHBOARD
N	NEUTRAL
NIC	NOT IN CONTRACT
NTS	NOT TO SCALE
P	POLE
PH, Ø	PHASE
PA	PUBLIC ADDRESS
PNL	PANEL
<R>	REMOVE
<RE>	RELOCATED EXISTING
<RL>	RELOCATE
SYM	SYMMETRICAL
T, TEL	TELEPHONE
TRANS, XFMR	TRANSFORMER
TYP	TYPICAL
UNLESS OTHERWISE NOTED	UNLESS OTHERWISE NOTED
V	VOLTS
VA	VOLT-AMPERES
W	WATTS
WP	WEATHERPROOF

SCHOOL EQUIPMENT ANCHORAGE

ALL ELECTRICAL COMPONENTS SHALL BE ANCHORED AND INSTALLED PER THE DETAILS ON THE DSA APPROVED CONSTRUCTION DOCUMENTS. WHERE NO DETAIL IS INDICATED, THE FOLLOWING COMPONENTS SHALL BE ANCHORED OR BRACED TO MEET THE FORCE AND DISPLACEMENT REQUIREMENTS PRESCRIBED IN THE 2010 CBC, SECTIONS 1615A.1.12 THROUGH 1615A.1.22 AND ASCE 7-05

- CHAPTER 6 AND 13.
- ALL PERMANENT EQUIPMENT AND COMPONENTS.
 - TEMPORARY OR MOVABLE EQUIPMENT ATTACHED (E.G. HARD WIRED) TO THE BUILDING UTILITY SERVICES SUCH AS ELECTRICITY, GAS OR WATER.
 - MOVABLE EQUIPMENT WHICH IS STATIONED IN ONE PLACE FOR MORE THAN 8 HOURS AND HEAVIER THAN 400 POUNDS ARE REQUIRED TO BE ANCHORED WITH TEMPORARY ATTACHMENTS.

THE ATTACHMENT OF THE FOLLOWING ELECTRICAL COMPONENTS SHALL BE POSITIVELY ATTACHED TO THE STRUCTURE, BUT NEED NOT BE DETAILED AND ASSOCIATED DUCTWORK, PIPING, AND CONDUIT.

- COMPONENTS WEIGHING LESS THAN 400 POUNDS AND HAVE A CENTER OF MASS LOCATED 4 FEET OR LESS ABOVE THE ADJACENT FLOOR OR ROOF LEVEL THAT DIRECTLY SUPPORT THE COMPONENT
- COMPONENTS WEIGHING LESS THAN 20 POUNDS, OR IN THE CASE OF DISTRIBUTED SYSTEMS, LESS THAN 5 POUNDS PER FOOT, WHICH ARE SUSPENDED FROM A ROOF OR FLOOR OR HUNG FROM A WALL.

FOR THESE ELEMENTS THAT DO NOT REQUIRE DETAILS ON THE APPROVED DRAWINGS, THE INSTALLATION SHALL BE SUBJECT TO THE APPROVAL OF THE STRUCTURAL ENGINEER OF RECORD AND THE DSA DISTRICT STRUCTURAL ENGINEER. THE PROJECT INSPECTOR WILL VERIFY THAT ALL COMPONENTS AND EQUIPMENT HAVE BEEN ANCHORED IN ACCORDANCE WITH ABOVE REQUIREMENTS.

DRAWING INDEX

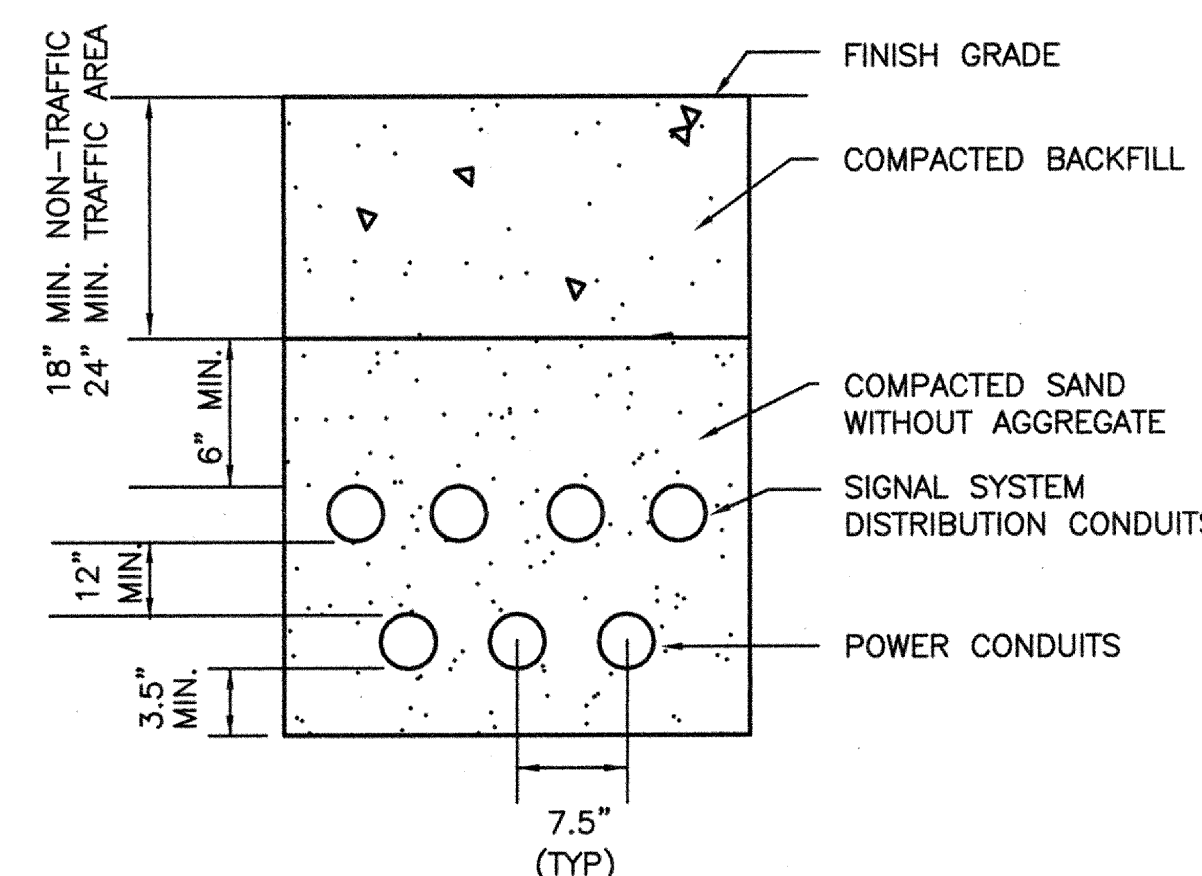
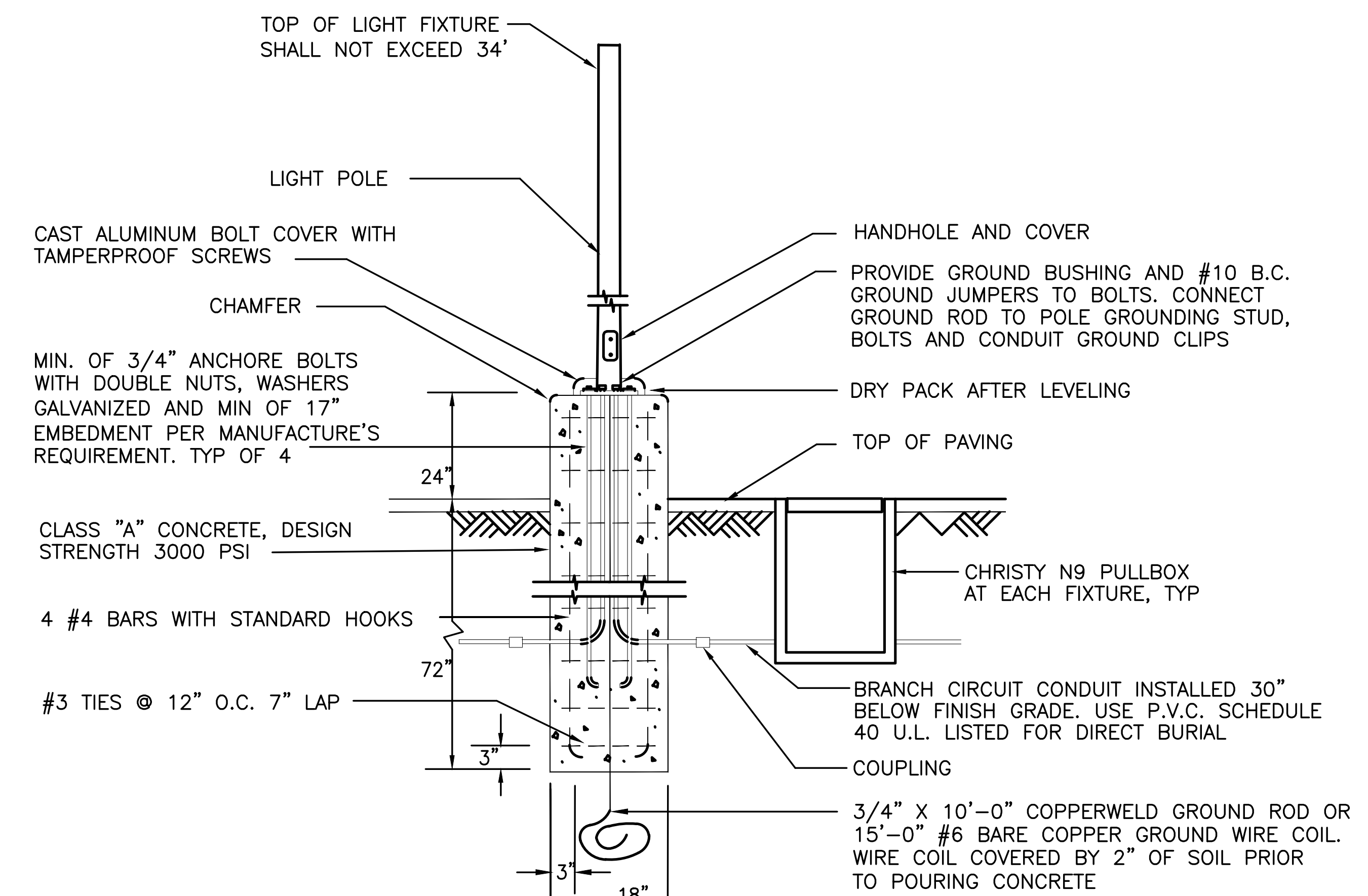
E0.1	ELECTRICAL SYMBOLS, ABBREVIATIONS, NOTES AND DETAILS
E1.1	ELECTRICAL PLANS

GENERAL NOTES

- READ THE SPECIFICATIONS AND COMPLY WITH ALL REQUIREMENTS. THESE GENERAL NOTES ARE INTENDED TO ASSIST THE CONTRACTOR DURING EXECUTION THE WORK; HOWEVER, THEY DO NOT COVER ALL OF THE SPECIFICATION REQUIREMENTS.
- ALL ELECTRICAL WORK SHALL COMPLY WITH THE CURRENT APPROVED EDITION OF THE CALIFORNIA ELECTRICAL CODE, AS ACCEPTED AND AMENDED BY LOCAL ORDINANCES.
- ANY EQUIPMENT AND MATERIALS FURNISHED BY THE CONTRACTOR SHALL BE NEW, UNUSED AND FREE FROM DEFECTS.
- FINAL ACCEPTANCE OF WORK IN PLACE SHALL BE SUBJECT TO APPROVAL BY SCHOOL DISTRICT REPRESENTATIVE, TENANT AND ARCHITECT/ENGINEER. INSTALLATION APPROVAL SHALL BE BASED ON APPROVED SUBMITTAL, SHOP DRAWINGS AND LOCAL INSPECTIONS.
- ALL WORK SHOWN ON DRAWINGS IS IN PART SCHEMATIC, INTENDED TO CONVEY SCOPE OF WORK AND GENERAL LAYOUT. VERIFY ALL EXISTING CONDITIONS AND MAKE ADJUSTMENTS AS REQUIRED.
- BRANCH CIRCUIT RACEWAY SHALL BE A MINIMUM OF 3/4" ELECTRICAL METALLIC TUBING (EMT) UNLESS OTHERWISE NOTED. RACEWAYS IN RAISED FLOOR OR IN PLENUM SPACE SHALL BE A MINIMUM OF 3/4" RIGID GALVANIZED STEEL (RGS) OR RIGID ALUMINUM (RAL) UNLESS OTHERWISE NOTED.
- ALL CONDUCTORS SHALL BE #12 AWG MINIMUM TYPE THHN/THWN UNLESS NOTED OTHERWISE.
- ALL OUTDOOR ELECTRICAL EQUIPMENT SHALL BE WEATHERPROOF.
- EXACT LOCATION OF ELECTRICAL DEVICES SHALL BE VERIFIED WITH THE ARCHITECT PRIOR TO INSTALLATION.
- CONDUIT ROUTES SHOWN ARE APPROXIMATE ONLY AND MUST BE ADJUSTED IN THE FIELD TO CLEAR OTHER FACILITIES.

Exterior Fixture Schedule

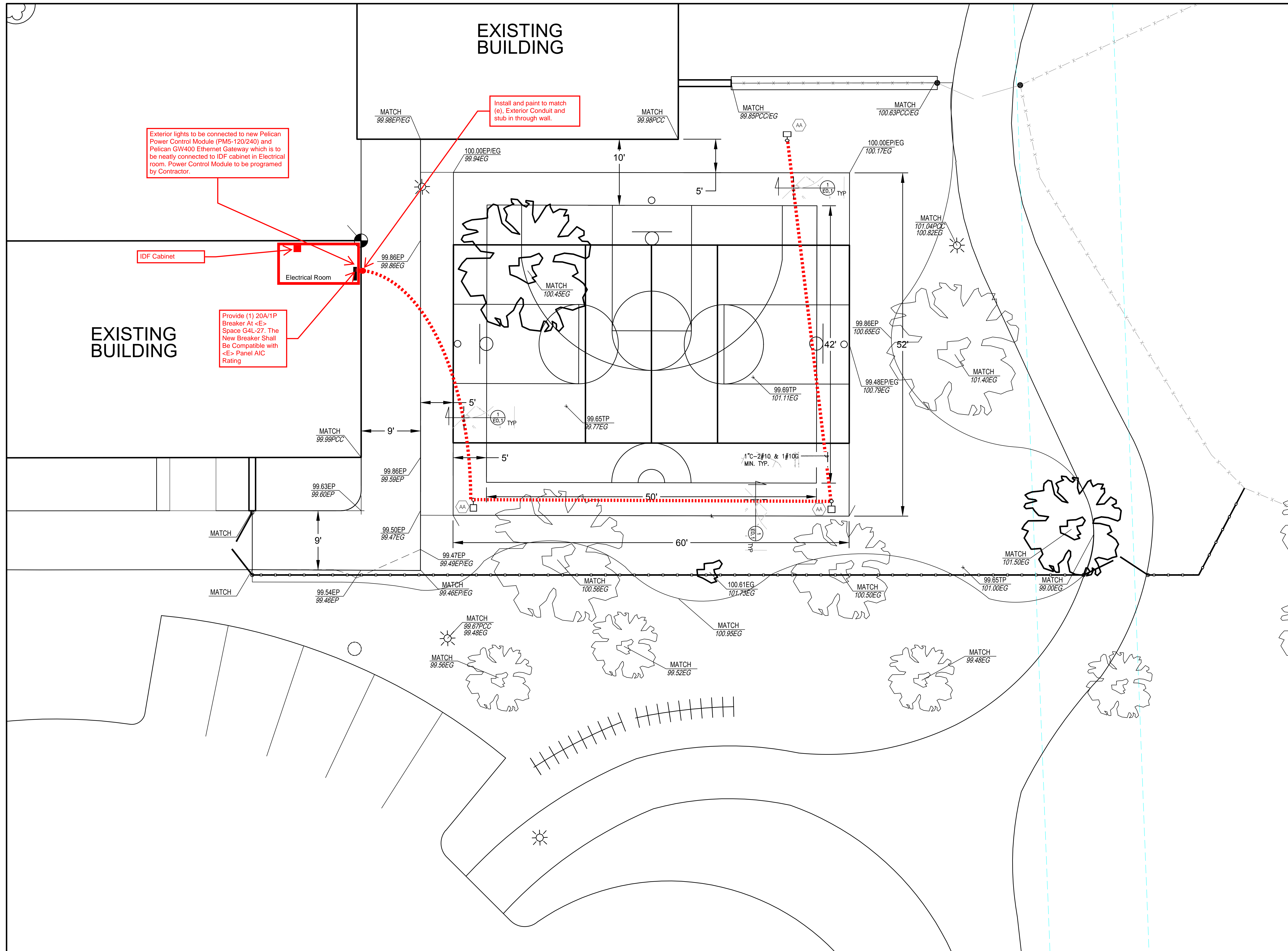
Type	Sketch	Description	Finish	Manufacturer	Lamp
AA		<p>Type 2 Distribution</p> <p>Housing: Aluminum injection</p> <p>Color Temperature: 3000K</p> <p>Drive Current: 500mA</p> <p>Optic: Flood</p> <p>Lens: Clear or diffused tempered glass</p> <p>Power Supply: 120V-277V</p> <p>LED Driver: Philips Xitanium 40W/100W</p> <p>Dimmable: 1-10V</p> <p>IP Rating: IP66</p> <p>Weight: 18 lbs (Luminaire Only) 18" Dia, Concrete base, see detail 2/E0.1</p>	Black	<p>Landscape Forms, Inc., 7800 E. Michigan Ave, Kalamazoo, Michigan 49048.</p> <p>Phone: (800) 521-2546. Fax (269) 381-3455. Website www.landscapeforms.com</p> <p>E-mail: specify@landscapeforms.com</p>	18/36 Cree XPG2 LEDs



NOTES:
 1. SEE SITE PLAN FOR NUMBER AND SIZE OF CONDUITS PER TRENCH.

1 TYPICAL TRENCH DETAIL
 NOT TO SCALE

2 POLE MOUNTED FIXTURE DETAIL
 NOT TO SCALE (NOTE: NOT PART OF DSA STRUCTURE REVIEW)



General Notes:

1. ELECTRICAL CONTRACTOR SHALL BE RESPONSIBLE TO OBTAIN AN INDEPENDENT UTILITY LOCATOR TO POTHOLE AND IDENTIFY ALL (E) UTILITIES PRIOR TO TRENCHING/BORING. CONTRACTOR SHALL MAXIMIZE USAGE OF BORING TO MINIMIZE DISTURBANCE OF (E) SITE CONDITIONS.
2. (E) CONDITION SHOWN ON THIS DRAWING WERE OBTAINED FROM AVAILABLE RECORD DRAWINGS. CONTRACTOR SHALL VERIFY EXISTING CIRCUITRY AND VOLTAGE PRIOR TO COMMENCEMENT OF WORK.
3. VERIFY LOCATION OF LIGHT POLE BASES BEFORE INSTALLING.

IH GHKL MODERNIZATION (EXTERIOR COURT & FENCING)

INDEPENDENCE HIGH SCHOOL

617 N Jackson Ave, San Jose, CA 95133

PROJECT#
Z-065-603

BID#
B-07-18-19

DRAWING DATE
09/21/2018

E 1.1
ELECTRICAL,
SITE PLAN