



Preparing every student to thrive in a global society.

2016 CAASPP Results Summary

The 2016 CAASPP results public data will be released Wednesday August 24th. A summary of results for the East Side Union High School District is below. This summary compares the 11th grade results from 2015 to 2016 and is simply a comparison of 11th grade class results showing a change in scores and should not be interpreted as student growth or no growth, however we can make statements of district improvement or non-improvement. We will also compare district results to the 5 comparable districts similar in demographics to ESUHSD, Sweetwater Union, Antelope Valley, Kern Union, Oxnard Union, and Anaheim Union and compare ESUHSD to Santa Clara County. State results have not been released.

The results of the exam are for English Language Arts and Mathematics. The student scores come in a scale of 1 – 4 which means Exceeding Standard (4), Meeting Standard (3), Standard Nearly Met (2), and Below Standard (1).

The 11th grade results also count for the Early Assessment Program (EAP) college readiness results. Students who score “exceeding standard” are considered “college ready” and can enroll in credit bearing college courses in math and or English when entering college. Students who score “Standard Met” are considered “conditionally college ready” and can take a qualifying course in grade 12 in English and or math and earn a C or better to earn “college ready” status.

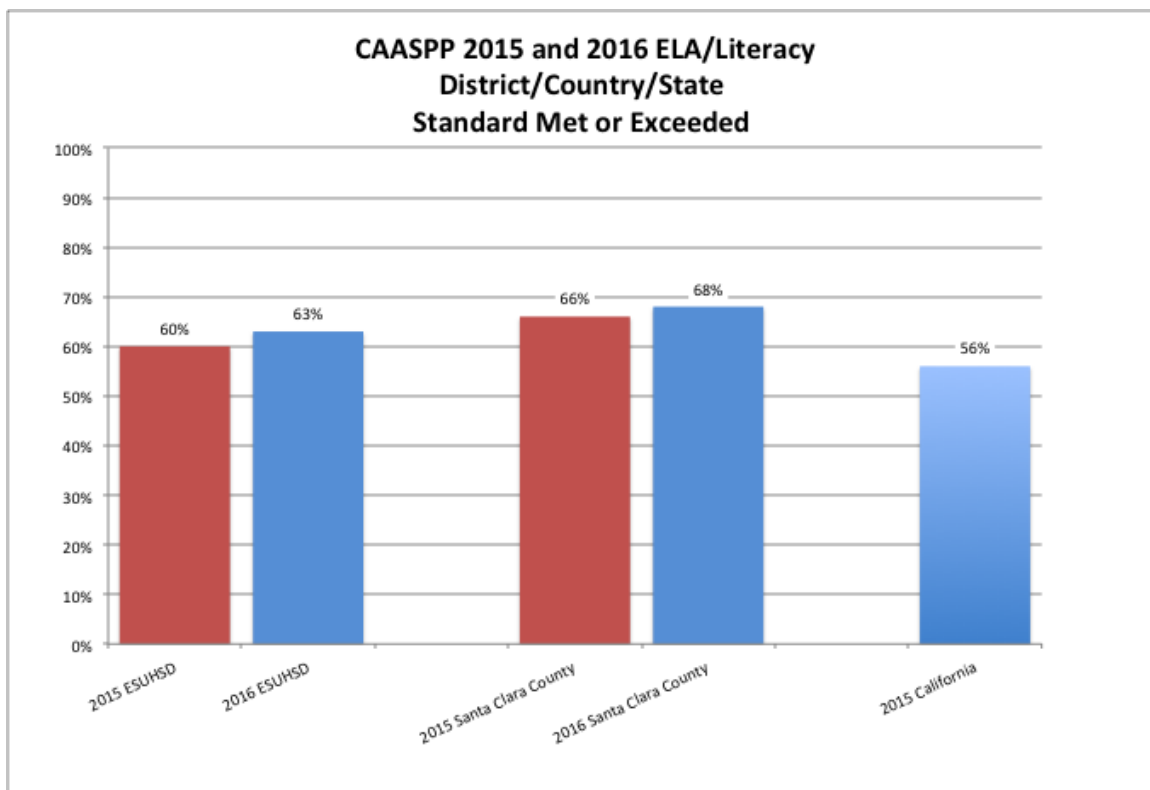
In General:

- **Overall** ESUHSD had a higher percentage of 11th grade students scoring “meeting or exceeding standard” in both English Language Arts (ELA) and Math in 2016 than in 2015.
- **English Language Arts**

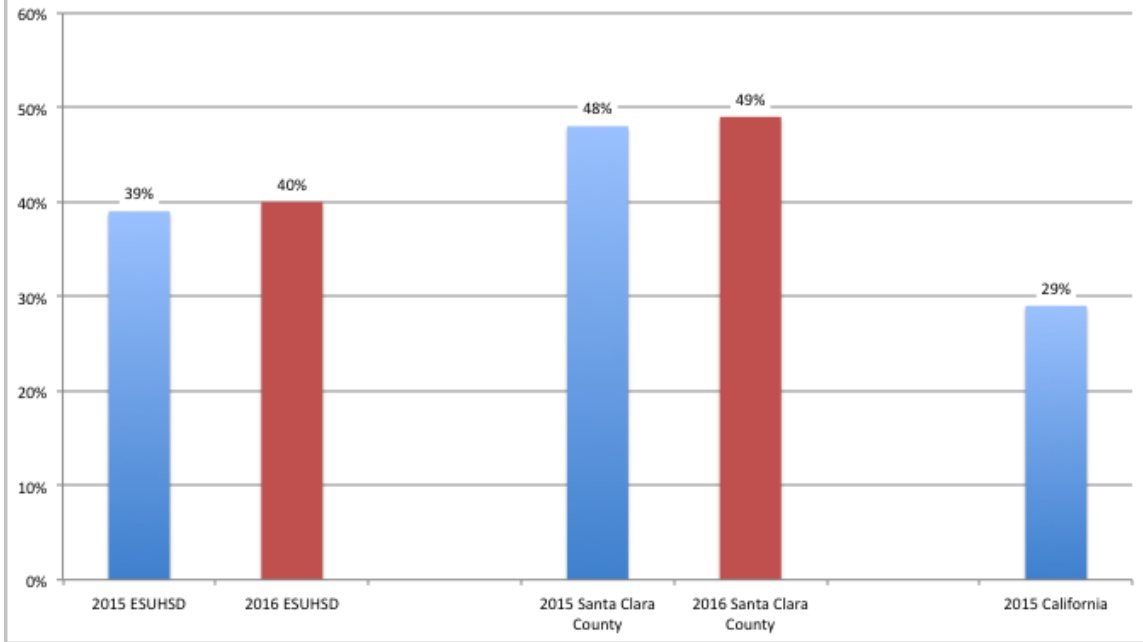
- African American, Asian, Hispanic, and White students had a higher percentage of students scoring “meeting or exceeding standard” than those populations last year in ELA.
- Both 11th grade Socioeconomically Disadvantaged students and Students With Disabilities had a higher percentage of students scoring “meeting or exceeding standard” than those populations last year.
- Overall English Language Learners had a higher percentage of students scoring “meeting or exceeding standard” than that population last year in ELA.
- Reclassified English Proficient and Initially Fluent English students outperform English Only students and English Language Learners in ELA.
- **Math**
 - Asian, and White students had a higher percentage of students scoring “meeting or exceeding standard” than those populations last year in Math while African American and Hispanic students show a lower percentage of students scoring in those bands.
 - Both 11th grade Socioeconomically Disadvantaged students and Students With Disabilities had a higher percentage of students scoring “meeting or exceeding standard” than those populations last year Math.
 - Overall English Language Learners had a higher percentage of students scoring “meeting or exceeding standard than that population last year in Math.
 - Reclassified English Proficient and Initially Fluent English students outperform English Only students and English Language Learners in Math.
 -
- **Overall** 30% of 11th graders scored “college ready” in ELA and 19% scored “college ready” in Math.
- **County & Comparable Districts**
 - ESUHSD scored below the county in both Math and ELA when comparing the percentage of students “exceeding standard” and “meeting or exceeding standard”.

- ESUHSD had a higher percentage of students scoring “exceeding standard” than the 5 comparable districts in both Math and ELA.
- ESUHSD had a higher percentage of students “meeting or exceeding standard” than 5 of the comparable districts in Math.
- ESUHSD had a higher percentage of students “meeting or exceeding standard” than 4 of the comparable districts and was the same as one of the comparable districts in ELA.

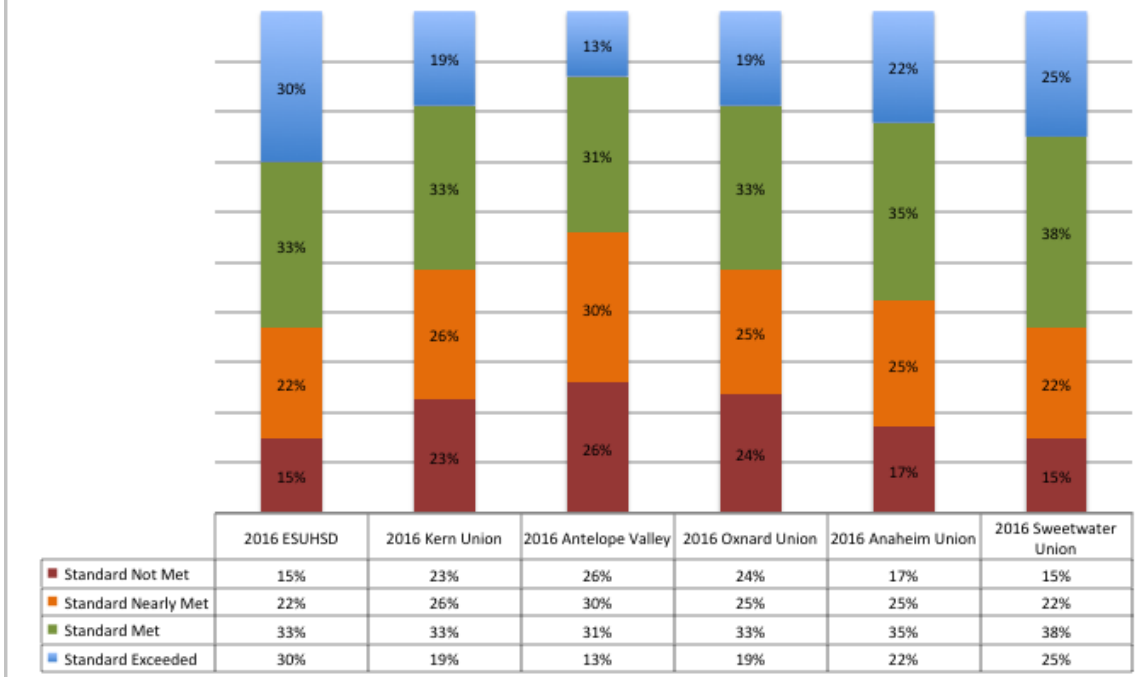
Data Graphs



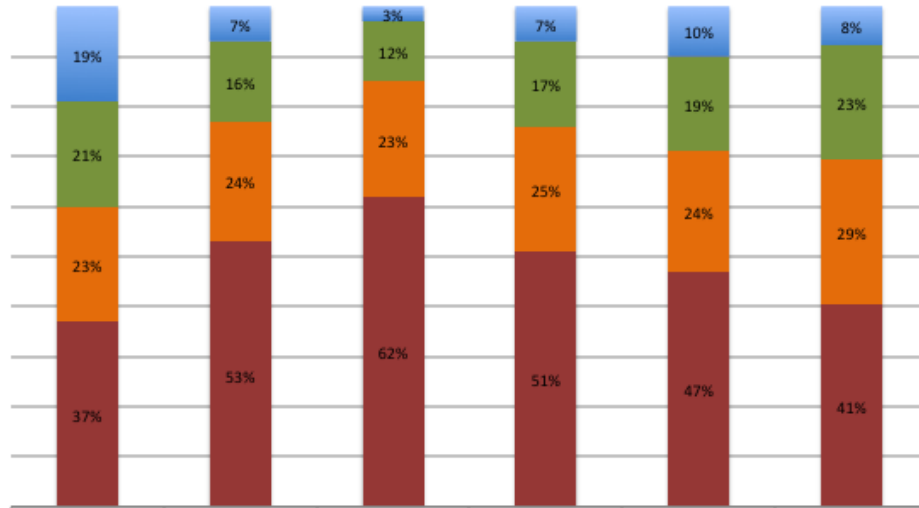
CAASPP 2015 and 2016 Math District/Country/State Standard Met or Exceeded



ESUHSD & Comparable Districts CAASPP 2016 ELA/Literacy Achievement Levels

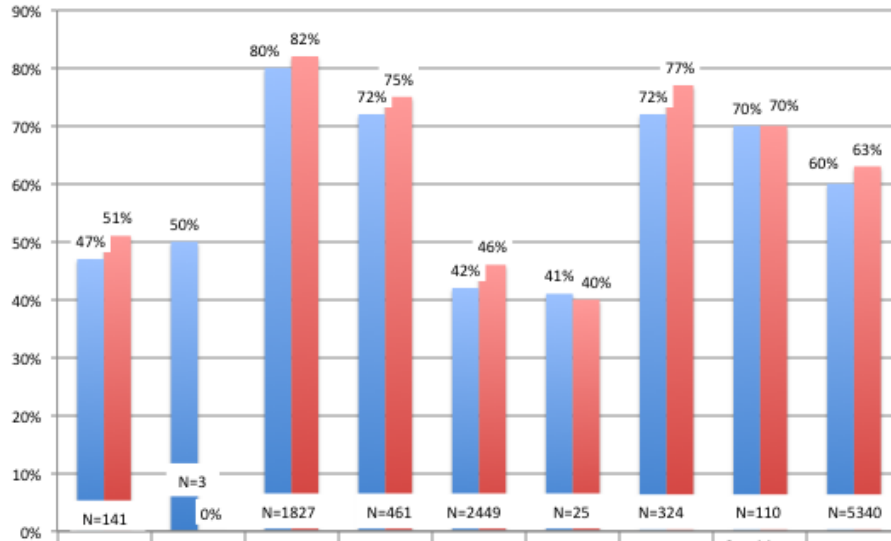


ESUHSD & Comparable Districts CAASPP 2016 Math Achievement Levels



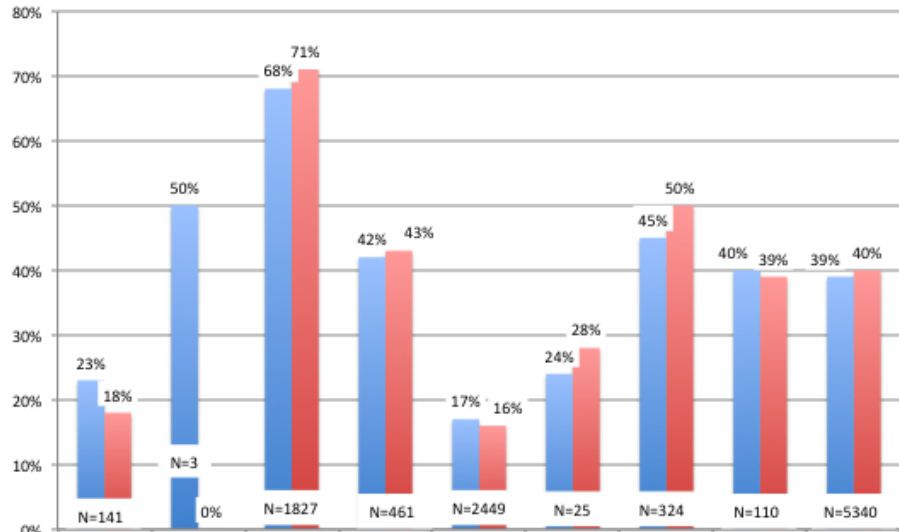
	2016 ESUHSD	2016 Kern Union	2016 Antelope Valley	2016 Oxnard Union	2016 Anaheim Union	2016 Sweetwater Union
Standard Not Met	37%	53%	62%	51%	47%	41%
Standard Nearly Met	23%	24%	23%	25%	24%	29%
Standard Met	21%	16%	12%	17%	19%	23%
Standard Exceeded	19%	7%	3%	7%	10%	8%

ESUHSD 2015 and 2016 CAASPP ELA/Literacy Results Met or Exceeded Standard by Ethnicity



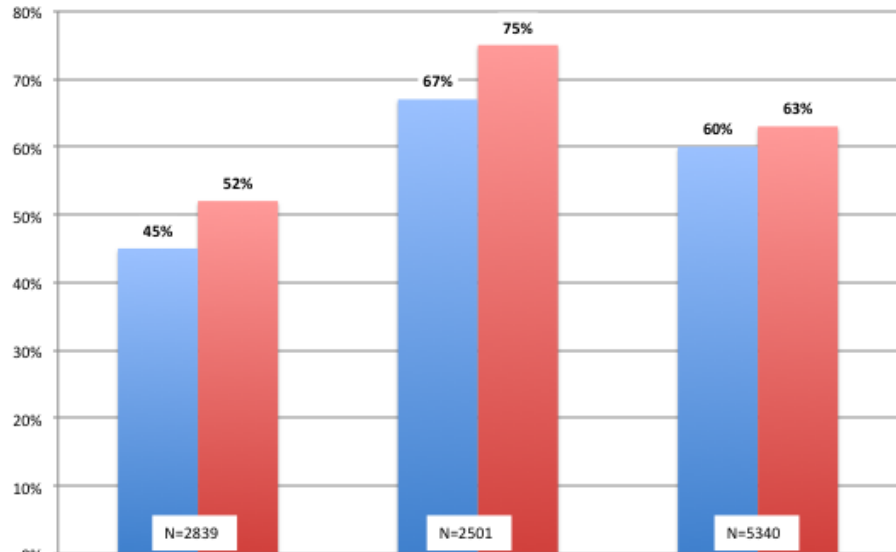
	Af Am	Nat Am	Asian	Filipino	Hispanic	Pac Islander	White	2 or More Races	District Total
2015 Standard Met or Exceeded	47%	50%	80%	72%	42%	41%	72%	70%	60%
2016 Standard Met or Exceeded	51%	0%	82%	75%	46%	40%	77%	70%	63%

ESUHSD 2015 and 2016 CAASPP MATH Results Met or Exceeded Standard by Ethnicity



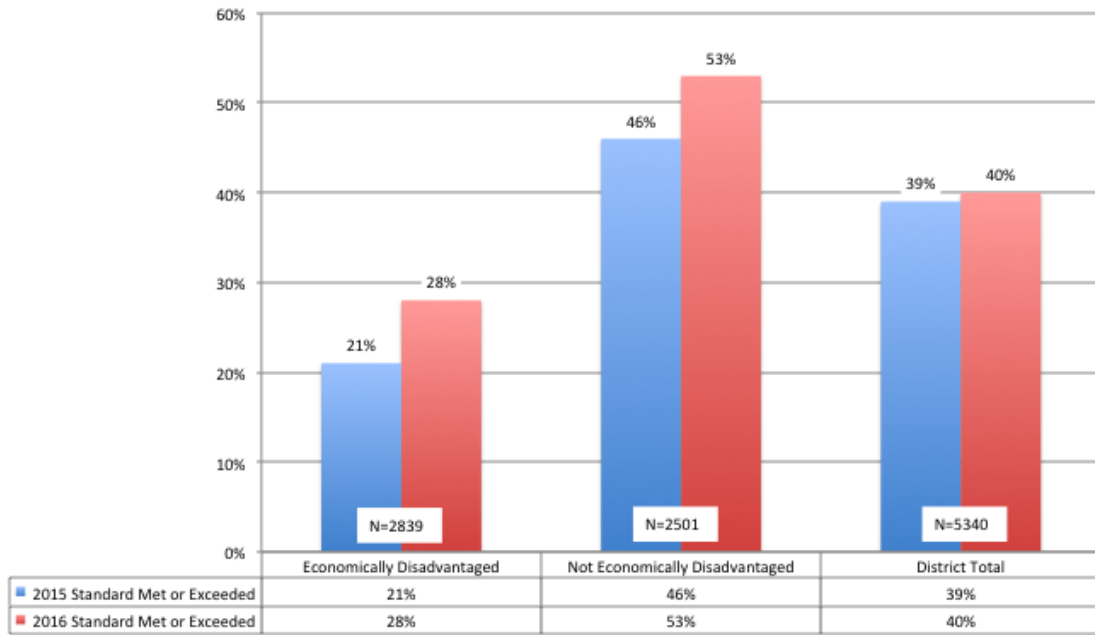
2015 Standard Met or Exceeded	23%	50%	68%	42%	17%	24%	45%	40%	39%
2016 Standard Met or Exceeded	18%	0%	71%	43%	16%	28%	50%	39%	40%

ESUHSD 2015 and 2016 CAASPP ELA/Literacy Results Met or Exceeded Standard by Socioeconomic Status

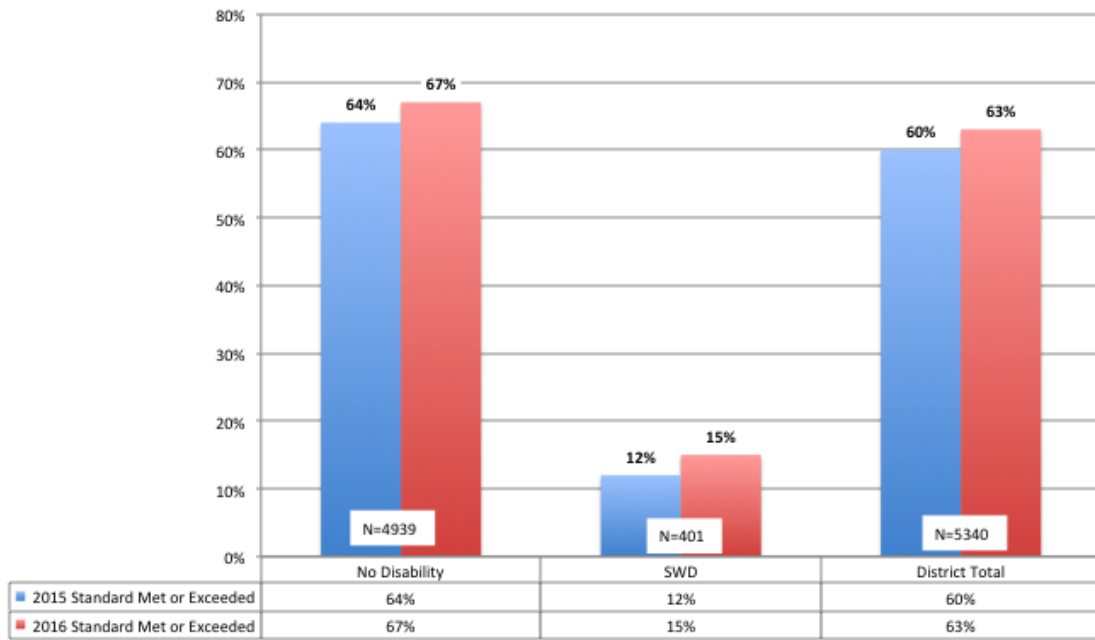


2015 Standard Met or Exceeded	45%	67%	60%
2016 Standard Met or Exceeded	52%	75%	63%

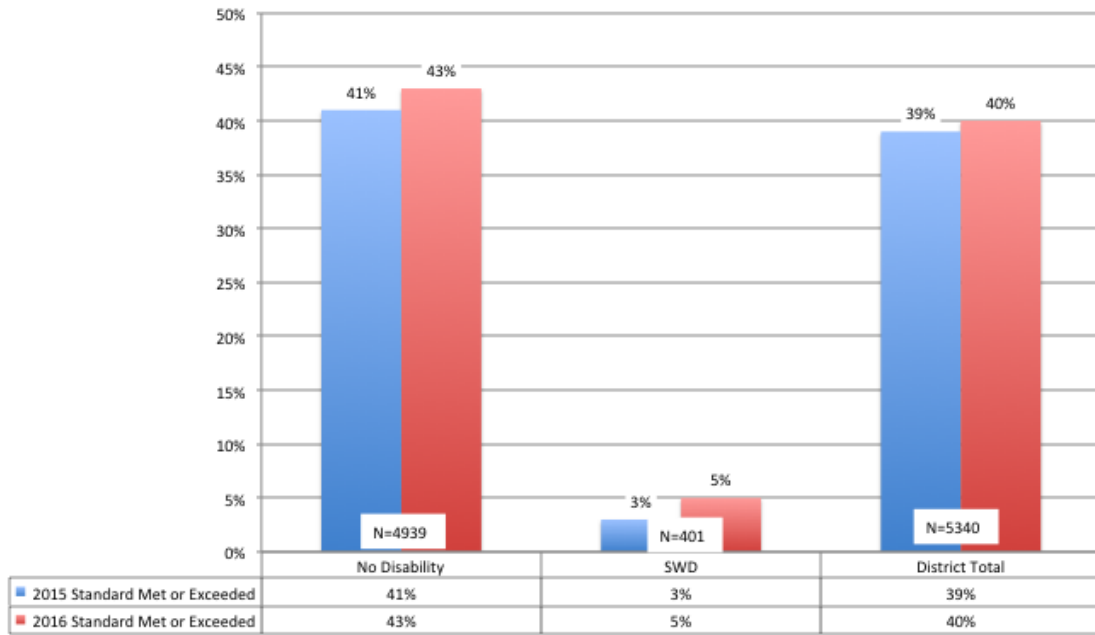
ESUHSD 2015 and 2016 CAASPP MATH Results Met or Exceeded Standard by Socioeconomic Status



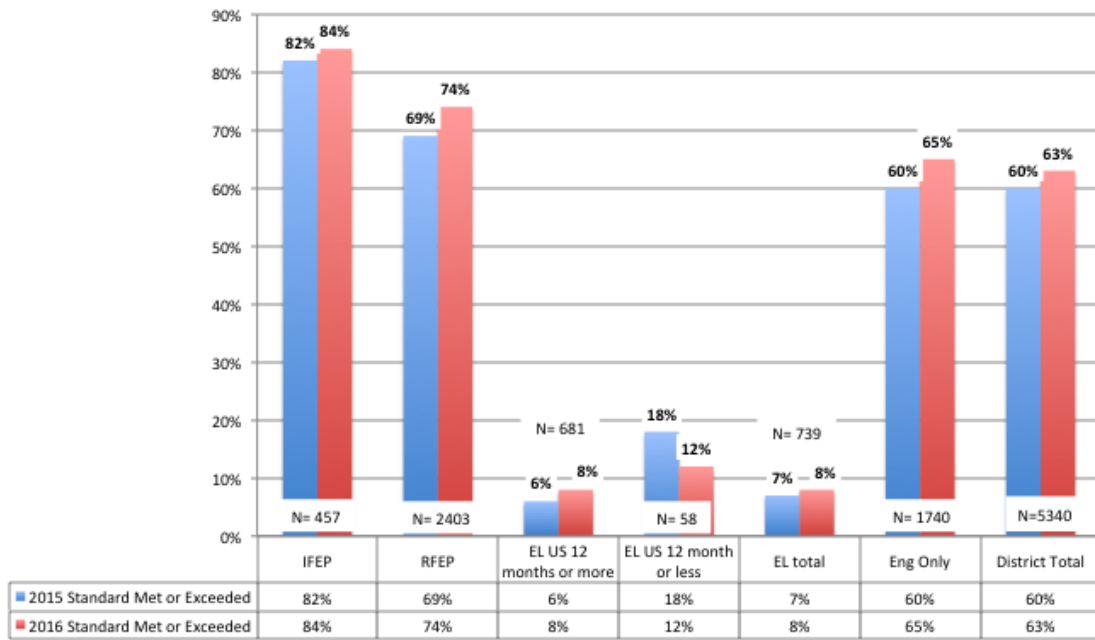
ESUHSD 2015 and 2016 CAASPP ELA/Literacy Results Met or Exceeded Standard by Disability Status



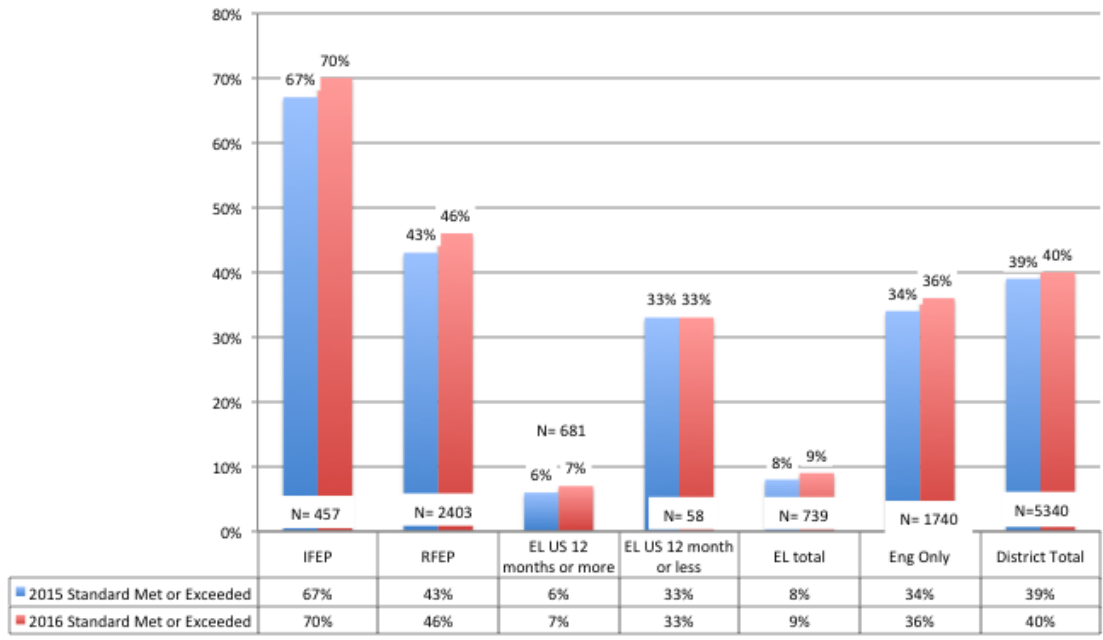
ESUHSD 2015 and 2016 CAASPP MATH Results Met or Exceeded Standard by Students with Disabilities



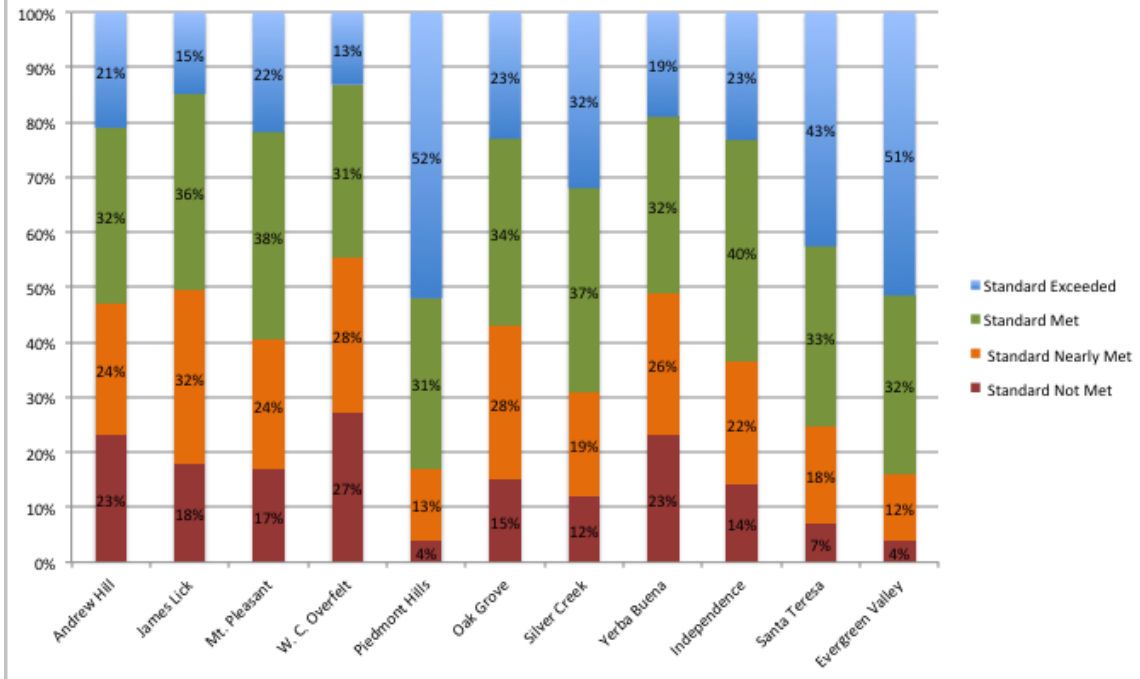
ESUHSD 2015 and 2016 CAASPP ELA/Literacy Results Met or Exceeded Standard by English Proficiency



ESUHSD 2015 and 2016 CAASPP MATH Results Met or Exceeded Standard by English Proficiency



ESUHSD CAASPP 2016 ELA Achievement Levels by School



ESUHSD CAASPP 2016 Math Achievement Levels by School

